



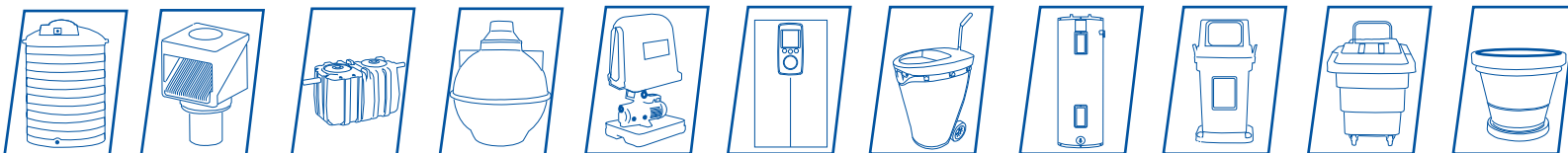
 [info@rotoplastics.co.tt](mailto:info@rotoplastics.co.tt)

 1-868-674-TANK (8265)



[www.rotoplastics.co.tt](http://www.rotoplastics.co.tt)

# PRODUCT CATALOGUE





## DISTRIBUTION MARKETS:

Antigua	Jamaica
Aruba	Martinique
Bahamas	Nicaragua
Barbados	Panama
Belize	Peru
Cayman Islands	Puerto Rico
Colombia	St.Kitts & Nevis
Costa Rica	St. Lucia
Curacao	St.Maarten
Dominica	St.Vincent
Dominican Republic	Turks & Caicos
El Salvador	Suriname
French Guiana	United States
Grenada	British Virgin Islands
Guadeloupe	U.S Virgin Islands
Guatemala	Venezuela
Guyana	
Haiti	
Honduras	

Established in 1976, **ROTOPLASTICS TRINIDAD LIMITED** initially focused on manufacturing Tuff Tank water tanks. Nearly five decades later, our portfolio has expanded to encompass a diverse range of rotomolded products and services tailored to industrial, commercial, and domestic needs.

Portfolio Expansion: We began with Tuff Tank water tanks and diversified into septic tanks, plant pots & planters, insulated containers, garbage bins, garbage bags, ropes, twines, and more.

Additionally, we proudly represent leading brands such as Pentax water pumps, Stiebel Eltron tankless water heaters, and various water treatment systems.

Our presence is bolstered by five subsidiaries:

- Trinidad Ropeworks Limited
- The Water Source Limited
- Rotoplastics (Barbados) Limited
- Rotoplastics (Saint Lucia) Limited
- Rhino Jamaica Limited.

Rotoplastics is synonymous with quality assurance, utilizing innovative product design and cutting-edge technology to consistently meet the demanding requirements of both local and international clientele.

## CORE OFFERINGS

### Water Storage Solutions

Our Tuff Water Tanks stand as our flagship product, boasting FDA-approved Health Gard Safety Lining, robust construction, and sizes ranging from 55 to 5000 gallons.

### Waste Management

We provide eco-conscious solutions, encompassing Waste Water Treatment Systems, Trash Bags, and Commercial Trash Bins. Our specialized septic systems, like Fatboy and Rhino Waste Treatment Systems, are engineered to withstand earth pressures.

### Water Management Products

Discover a range of essential products, including Stiebel Eltron Water Heaters, Pentax Water Pumps, and energy-efficient plumbing accessories.

### Decorative Planters

Elevate your space with our collection of modern and traditional planters, enhancing the aesthetic appeal of homes, malls, and businesses alike.

### Insulated Containers

Experience superior insulation with our Rotocool line of containers featuring thick insulated foam capable of maintaining cold temperatures for up to six days. Enjoy peace of mind with our solid five-year durability guarantee.

**At Rotoplastics, we remain dedicated to delivering exceptional solutions in waste management, water storage, and insulation. Our commitment to quality and sustainability ensures enduring value for our customers.**





# DIRECTORY

**01**

**TUFF TANK**  
PAGES 5-22

**02**

**RHINO SEPTICS**  
PAGES 23-27

**03**

**FATBOY SEPTICS**  
PAGES 28-31

**04**

**GREASE TRAPS**  
PAGES 32

**05**

**STA-RITE PUMPS**  
PAGES 33-34

**06**

**PENTAX WATER PUMPS**  
PAGES 35-40

**07**

**COELBO SMARTHEAD**  
PAGE 41

**08**

**STIEBEL ELTRON TANK-  
LESS WATER HEATERS**  
PAGES 42-45

**09**

**AQUA POWER TANKLESS  
WATER HEATERS**  
PAGES 46-47

**10**

**STATE WATER HEATERS**  
PAGES 48-49

**11**

**ROTOCOOL**  
PAGES 50-55

**12**

**AQUACULTURE TANKS**  
PAGE 56

**13**

**PONDLINERS**  
PAGE 57

**14**

**TUFF PLUNGE**  
PAGE 57

**15**

**STACKING TRAYS**  
PAGE 58

**16**

**RHINO WASTE  
SOLUTIONS**  
PAGES 59-70

**17**

**ISLAND PLANTERS**  
PAGES 71-92

**18**

**STURDY ROPES**  
PAGES 93-95

**19**

**BANANA INDUSTRY  
ESSENTIALS**  
PAGES 96-97





**A TUFF  
ACT TO  
BEAT!**

**TUFF  
TANK**

**HEALTH  
GARD**  
INNER LINING



**Rotoplastics** is one of the Caribbean's leading manufacturers of rotationally molded polyethylene water tanks. Ideal for multi-purpose use such as: storing safe drinking water, rainwater harvesting & collection, emergency back up in home water storage tanks and farm irrigation.

### MATERIAL

- 100% virgin polyethylene
- UV resistant
- Outer black layer which prevent sunlight from penetrating the tank

### DEPENDABILITY:

Rugged multi-ribbed construction ensures a durable and dependable tank. TUFF TANK is built to last with our highest standards.

### HEALTH GARD SAFETY LINING

Tuff Tanks are engineered using a two part system of prime grade linear polyethylene layers. The inner layer is a Food Grade FDA compliant virgin polyethylene material that ensures the safety of your drinking water.



**10**  
**YEAR**  
MANUFACTURER'S WARRANTY







**DIAMETER** 36.63" | 93.03 cm  
**HEIGHT** 56.00" | 142.24 cm  
**CAPACITY** 200 gal | 757.08 L  
**OUTLET** 0.75" | 1.905 cm  
**200 US Gallon**



**DIAMETER** 46.64" | 118.43 cm  
**HEIGHT** 71.50" | 181.61 cm  
**CAPACITY** 450 gal | 1703.43 L  
**OUTLET** 0.75" | 1.905 cm  
**450 US Gallon**



**DIAMETER** 56.25" | 142.88 cm  
**HEIGHT** 77.00" | 195.58 cm  
**CAPACITY** 650 gal | 2460.52 L  
**OUTLET** 0.75" | 1.905 cm  
**650 US Gallon**



**DIAMETER** 63.00" | 160.02 cm  
**HEIGHT** 89.50" | 227.33 cm  
**CAPACITY** 878 gal | 3323.59 L  
**OUTLET** 1.50" | 3.810 cm  
**800 US Gallon**



**DIAMETER** 65.63" | 166.69 cm  
**HEIGHT** 97.75" | 248.29 cm  
**CAPACITY** 1085 gal | 4107.17 L  
**OUTLET** 1.50" | 3.810 cm  
**1000 US Gallon**



**DIAMETER** 79.75" | 202.57 cm  
**HEIGHT** 121.00" | 307.34 cm  
**CAPACITY** 2069 gal | 7832.01 L  
**OUTLET** 2.00" | 5.080 cm  
**2000 US Gallon**



**DIAMETER** 89.75" | 227.97 cm  
**HEIGHT** 117.50" | 298.45 cm  
**CAPACITY** 2850 gal | 10788.42 L  
**OUTLET** 2.00" | 5.080 cm  
**2850 US Gallon**



**DIAMETER** 89.50" | 227.33 cm  
**HEIGHT** 154.50" | 392.43 cm  
**CAPACITY** 3558 gal | 13468.49 L  
**OUTLET** 3.00" | 7.620 cm  
**3500 US Gallon**

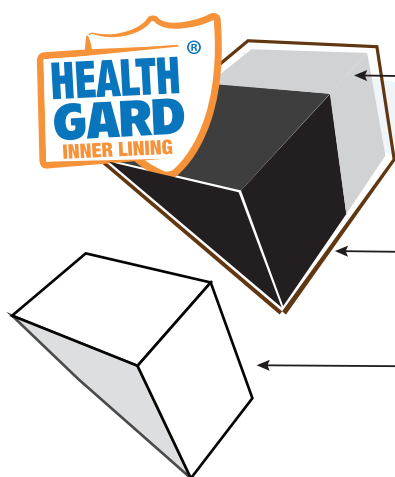


**DIAMETER** 93.00" | 236.22 cm  
**HEIGHT** 181.00" | 459.74 cm  
**CAPACITY** 4863 gal | 1840.45 L  
**OUTLET** 3.00" | 7.620 cm  
**5000 US Gallon**



## CLOSED & OPEN TOP TANK FEATURES:

2 LAYER CONSTRUCTION ( All materials compliant with F.D.A standards)



FIRST LAYER: Health Gard® Safety Lining-antibacterial properties which prevents bacteria, fungus and algae from forming.

SECOND LAYER: Black material keeps all sunlight out which prevents algae from forming.

A THIRD LAYER is present when a premium outer colour is desired for a beautiful finish. UV resistant, and reduces heat absorption. See standard colours below.

### HEALTH GARD SAFETY LINING

The inner layer of the tank is a Food Grade virgin polyethylene material that ensures the safety of your drinking water.

### TUFF TOP

Cover designed with anti-sink features. Tuff Tanks have reinforced strength from the top down.

### QUALITY FITTINGS

Heavy duty bulkhead fitting.

### DEPENDABILITY

Rugged multi-ribbed construction ensures a durable and dependable tank, engineered to stand the test of time.

### LOCKING PINS

Available for Open Top Tanks to properly secure cover to the tank body (200-1000 gal)



Standard colour



Available upon request  
(At an additional charge)







## CKD WATER TANK FEATURES:

### TUFF TOP

Cover designed with anti-sink features to withstand weight and not sink in.

### 12" OFFSET MANWAY COVER

Provides easy plumbing access for cleaning purposes.

### 4" RAINWATER PORT

Molded inlet port for rainwater harvesting. (Rainwater Catchment sold separately).

### STACKABLE DESIGN

Tapered design stacks closely together with minimal lost space. Depending on the size of the tank, stacks can range from 11 to 30 tanks high.

### TIE DOWN LUGS

4 lugs at each shoulder to secure tank from heavy winds and allows for easy lifting/ handling. Not available for 55, 100 and 1000 Gal CKD Tanks



<b>DIAMETER</b>	20.63"   52.39 cm
<b>HEIGHT</b>	40.00"   101.60 cm
<b>CAPACITY</b>	49 gal   185.49 L
<b>OUTLET</b>	0.75"   1.905 cm

**55 US  
Gallon**

Standard colour



Available upon request  
(At an additional charge)



### Low Profile



**DIAMETER** 75.00" | 190.50 cm  
**HEIGHT** 39.00" | 99.06 cm  
**CAPACITY** 414 gal | 1567.16 L  
**OUTLET** 0.75" | 1.91 cm  
**400 US Gallon**

### Low Profile



**DIAMETER** 63.00" | 160.00 cm  
**HEIGHT** 48.00" | 122.00 cm  
**CAPACITY** 503 gal | 1904.00 L  
**OUTLET** 0.75" | 1.91 cm  
**500 US Gallon**



**DIAMETER** 35.00" | 88.90 cm  
**HEIGHT** 48.25" | 122.56 cm  
**CAPACITY** 97 gal | 367.18 L  
**OUTLET** 0.75" | 1.91 cm  
**100 US Gallon**



**DIAMETER** 42.63" | 108.27 cm  
**HEIGHT** 59.63" | 151.45 cm  
**CAPACITY** 201 gal | 760.87 L  
**OUTLET** 0.75" | 1.91 cm  
**200 US Gallon**



**DIAMETER** 55.50" | 140.97 cm  
**HEIGHT** 69.88" | 177.48 cm  
**CAPACITY** 374 gal | 1415.74 L  
**OUTLET** 0.75" | 1.91 cm  
**400 US Gallon**



**DIAMETER** 60.75" | 154.31 cm  
**HEIGHT** 73.25" | 186.06 cm  
**CAPACITY** 596 gal | 2256.10 L  
**OUTLET** 0.75" | 1.91 cm  
**600 US Gallon**



**DIAMETER** 83.63" | 212.41 cm  
**HEIGHT** 77.25" | 196.22 cm  
**CAPACITY** 909 gal | 3440.94 L  
**OUTLET** 1.50" | 3.81 cm  
**1000 US Gallon**





<b>DIAMETER</b>	56.25"   142.88 cm	<b>600 US Gallon</b>
<b>HEIGHT</b>	76.00"   193.04 cm	
<b>CAPACITY</b>	572 gal   2165.25 L	
<b>OUTLET</b>	0.75"   1.905 cm	



<b>DIAMETER</b>	63.00"   160.02 cm	<b>800 US Gallon</b>
<b>HEIGHT</b>	88.50"   224.79 cm	
<b>CAPACITY</b>	798 gal   3020.76 L	
<b>OUTLET</b>	1.50"   3.810 cm	



<b>DIAMETER</b>	65.63"   166.69 cm	<b>1000 US Gallon</b>
<b>HEIGHT</b>	96.75"   245.75 cm	
<b>CAPACITY</b>	968 gal   3664.28 L	
<b>OUTLET</b>	1.50"   3.810 cm	



<b>DIAMETER</b>	76.00"   205.74 cm	<b>2000 US Gallon</b>
<b>HEIGHT</b>	121.00"   285.75 cm	
<b>CAPACITY</b>	1851 gal   7006.79 L	
<b>OUTLET</b>	2.00"   5.080 cm	



**DIAMETER** 24.50" | 62.23 cm  
**HEIGHT** 72.50" | 184.15 cm  
**CAPACITY** 110 gal | 416.00 L  
**OUTLET** 0.75" | 1.905 cm

**110 US  
Gallon**



**DIAMETER** 28.25" | 71.76 cm  
**HEIGHT** 80.25" | 203.84 cm  
**CAPACITY** 191 gal | 723.00 L  
**OUTLET** 0.75" | 1.905 cm

**200 US  
Gallon**

Standard colours



Available upon request  
(At an additional charge)





### SLIM LINE FEATURES:

- Designed to pass through standard doorways
- Made from Polyethylene
- Extremely durable and made to last
- For indoor and outdoor use
- Available in 110 and 200 US Gallons
- 3/4" Bulkhead fitting

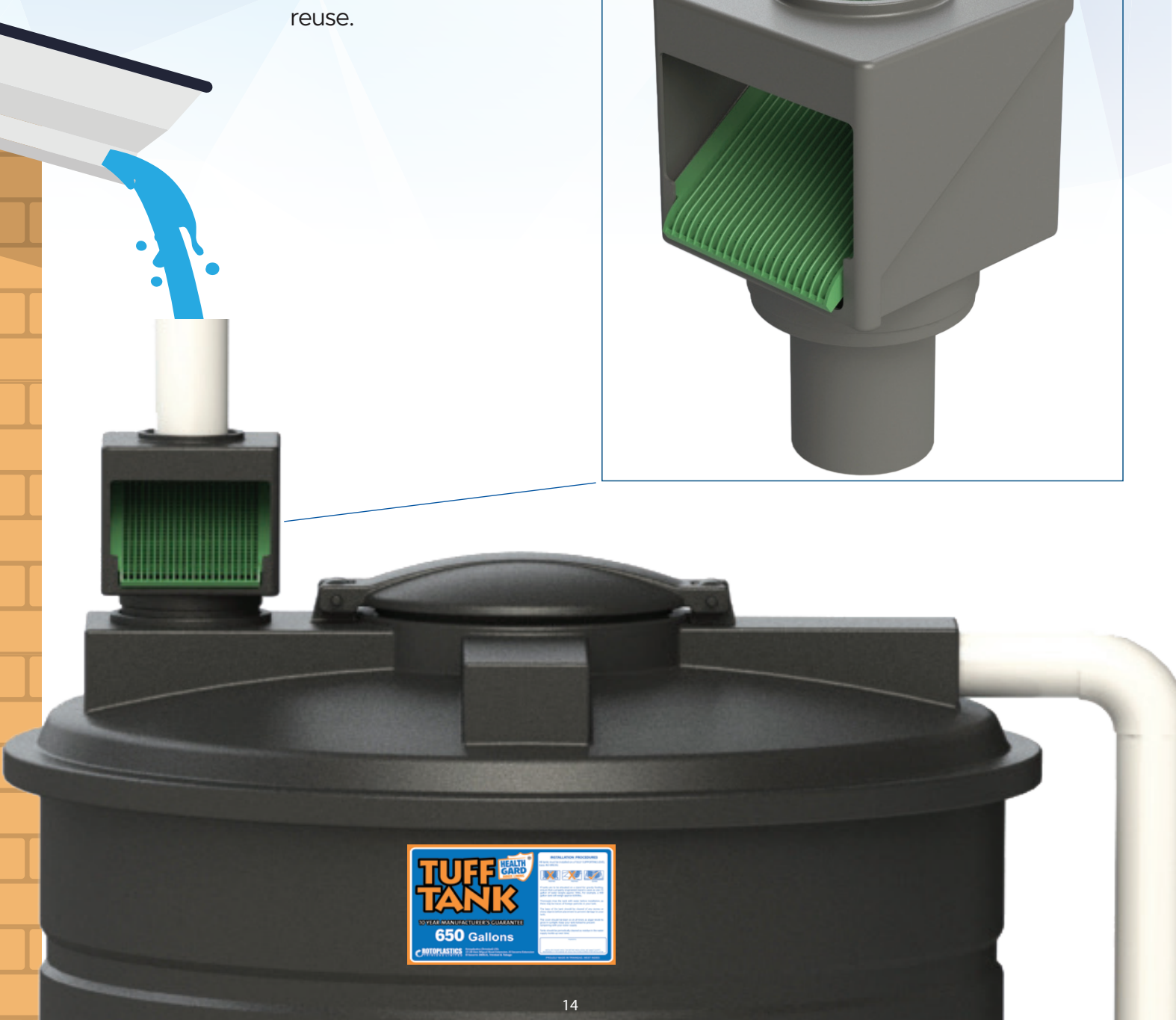
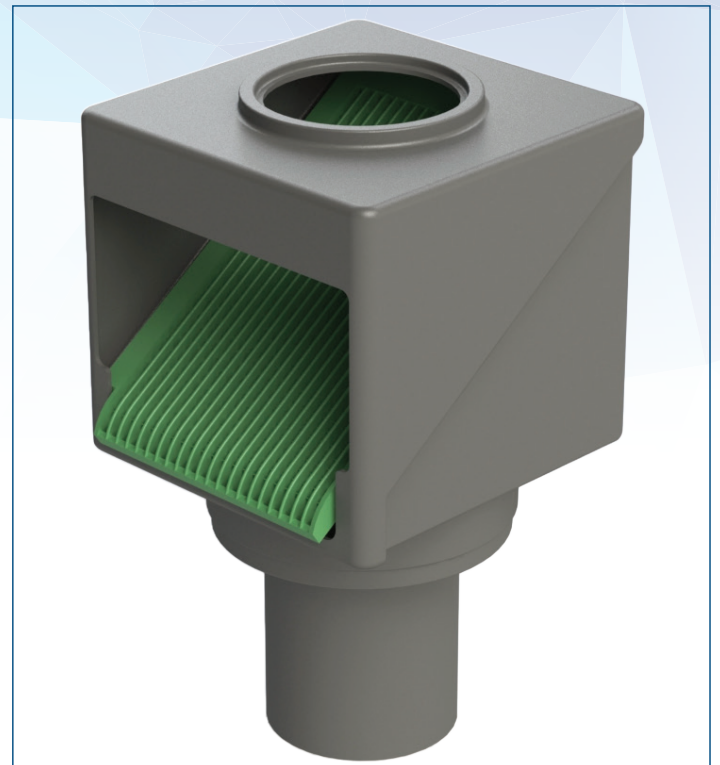
**SAVE SPACE WITH OUR  
SLIM LINE TANKS.  
PERFECT FOR  
APARTMENTS &  
STUDIOS**





# NEW! RAINWATER HARVESTER

A device that channels and filters  
rainwater to a vessel for storage and  
reuse.

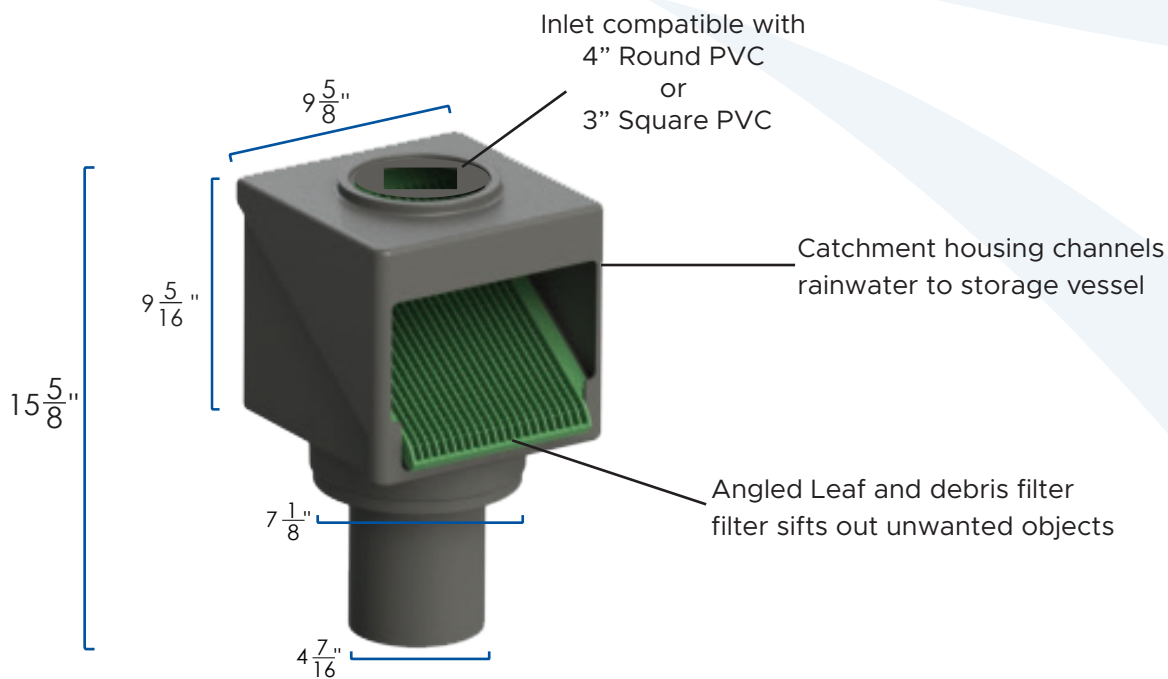




### RAINWATER HARVESTER FEATURES:

#### Compatible with:

- Tuff Tank Closed Top:  
400, 450, 650, 800 and 1000 Gal
  - Tuff Tank CKD:  
400, 600, 800 and 1000 Gal
- Easily removable filter tray for easy maintenance



Port



### Features

Manufactured from Polypropylene  
EPDM Gasket Seal  
Left-Hand Threaded  
Buttress threads protect against blowout

### Materials

Body & Nut: Polypropylene Impact Co-polymer  
Gasket: Thermoplastic Elastomer  
Viton gaskets also available for chemicals, solvents, alcohols and more

### Threads

Internal-NPT molded female threads  
External-Buttress left hand threads



BULKHEAD FITTINGS



WOUND MESH  
CARTRIDGE  
9" | 20"



WASHABLE NET  
CARTRIDGE  
9"



ACTIVE CARBON  
CARTRIDGE  
9"



FILTER HOUSING  
WHITE/CLEAR  
9" | 20"

Filter cartridge housing with brass inserts and transparent bowl.

### Applications:

- Water treatment
- General Industry
- Agricultural
- Domestic applications
- Water pump systems

### Features

- Non-corrosive material construction
- Switch to lock in off position
- Flow stops when unscrewed for servicing
- Built in check valve
- Valve body screws apart by hand for easy servicing
- Fully adjustable float angle
- Pressure range 0-10 Bar (0-150 PSI)
- Side, Bottom and Top mounting
- Supplied with back nut and seal washer
- Extension arm included for above water mounting
- Comes with a 36" long inlet thread, back-nut and seal
- No Bulkhead fitting required



FLOAT  
VALVES



8" RAINWATER  
FILTER BASKET



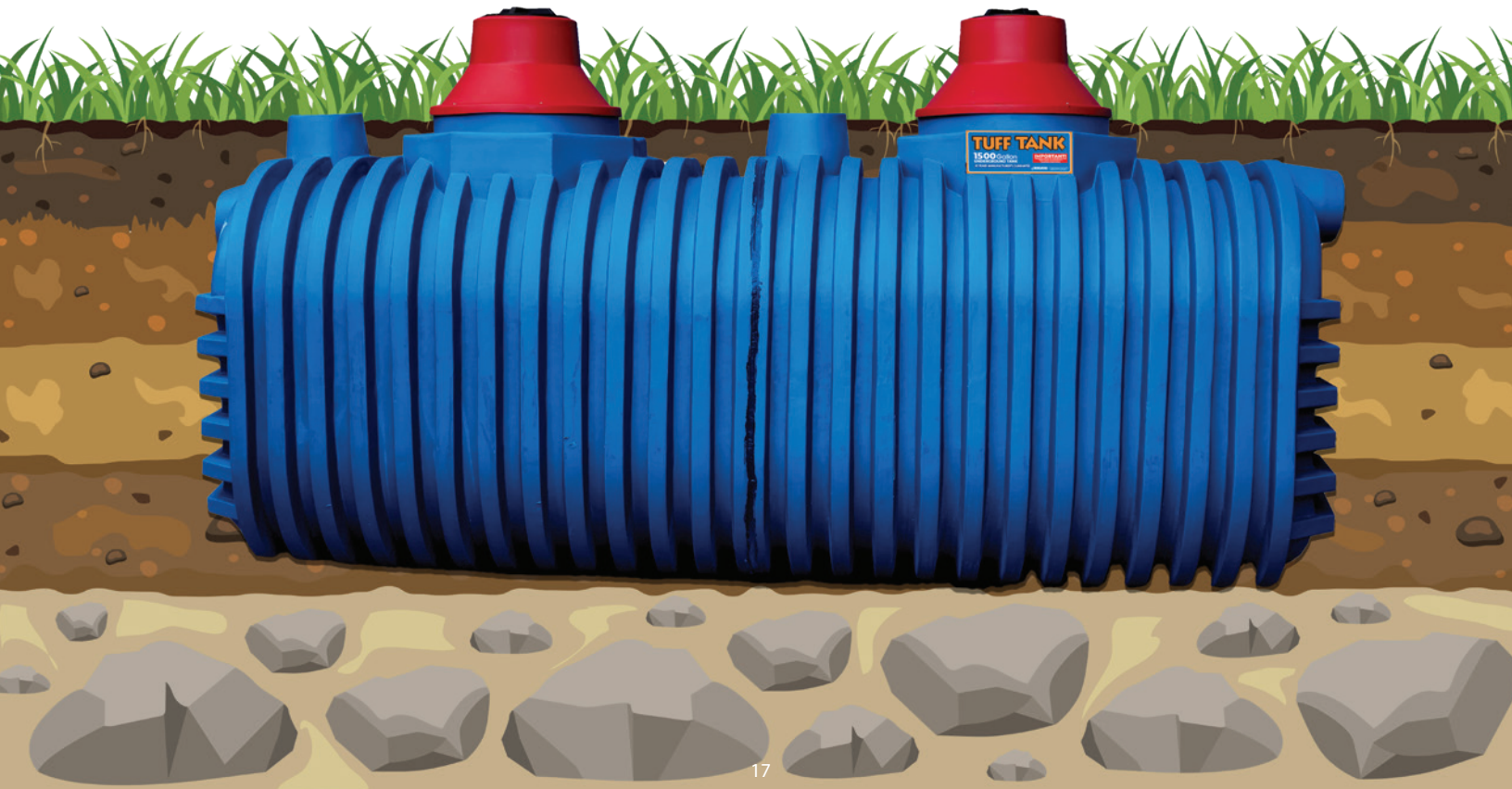
18" FLIP COVER

# TUFF TANK



## UNDERGROUND TANKS

**1500 US Gallon**





## UNDERGROUND TANK FEATURES:

All Tuff Tank underground water tanks are manufactured from prime grade linear polyethylene.

### RESISTANT TO IMPACT & CRACKING

Designed to withstand earth's pressure that would crack traditional tanks.

### RESISTANT TO MOST CHEMICALS & COMPOUNDS

Tanks are completely unaffected by any soil or underground based substances.

### LIGHTWEIGHT AND COMPACT

No heavy lifting equipment needed for installation.

### ENVIRONMENTAL FRIENDLY

Our underground tanks prevents any outside molecules or water from entering into the tank leaving it fresh and clean.

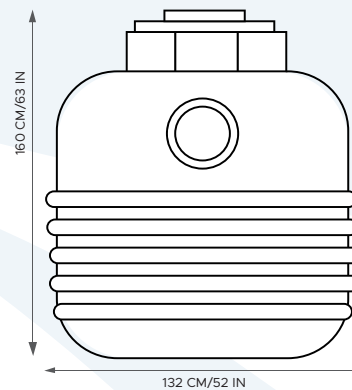
### EFFLUENT FILTERS

Ensuring that solids do not enter the tank.

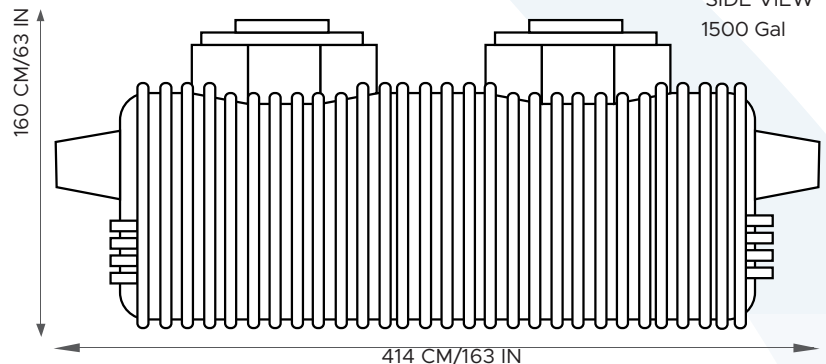
### MANHOLE EXTENSION & FILTER PORT EXTENSION

Allows the tank to be buried deeper into the ground while providing easy access for cleaning.

FRONT VIEW  
1500 Gal



SIDE VIEW  
1500 Gal





# TUFF TANK



## Transport Tanks (Horizontal Leg Tank)

**225 US Gallon**





# TRANSPORT TANKS

## TRANSPORT TANK FEATURES:

### EASY TO INSTALL

Pre-installed outlet drain fitting on one end makes plumbing hookup easy.

### SEAMLESS DESIGN

One-piece, seamless, watertight tank.

### STURDY SUPPORT

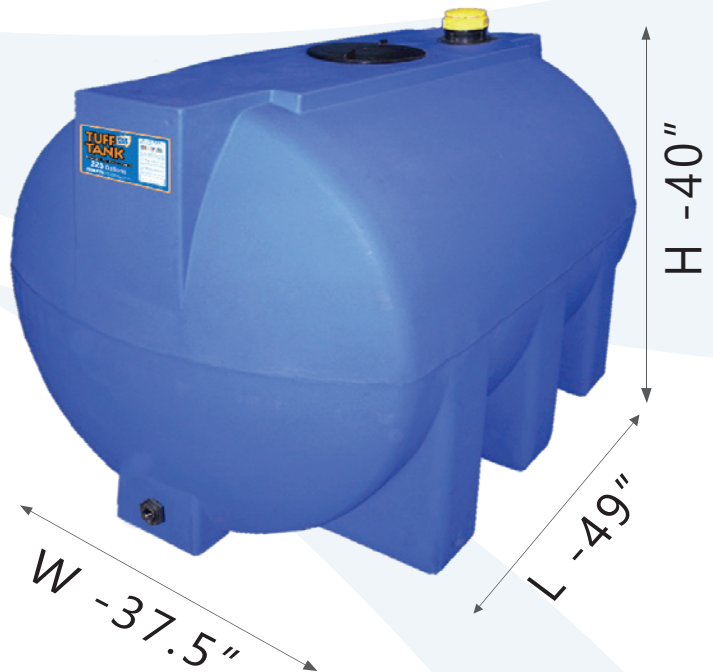
Legs prevents turbulence to reduce sloshing and allow for easy securing for transport.

### DURABLE RAW MATERIAL

Manufactured of polyethylene by means of the rotational molding process.

### FDA COMPLIANT

100% FDA compliant materials thus safe for storage of water and will not impart any taste or residue.



# **TUFF TANK**

## **OIL COLLECTION TANK**

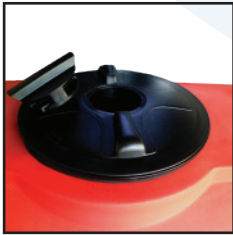
### **225 US Gallon**



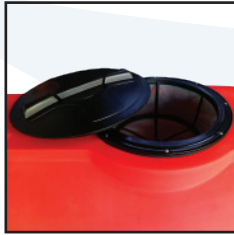


### OIL TANK FEATURES:

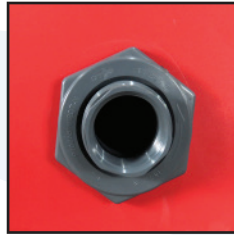
Standard Colour: Red



16" COVER



16" FILTER BASKET



2" OUTLET

Oil Collection Tanks are ideal for domestic, commercial, industrial and automotive applications. Suitable for use in garages, factories, transport and machinery yards, marinas, gas stations and any other areas where waste oil is likely to be collected.

#### DURABLE

Durable, heavy duty construction to ensure containment of tank contents.

#### QUALITY MATERIALS

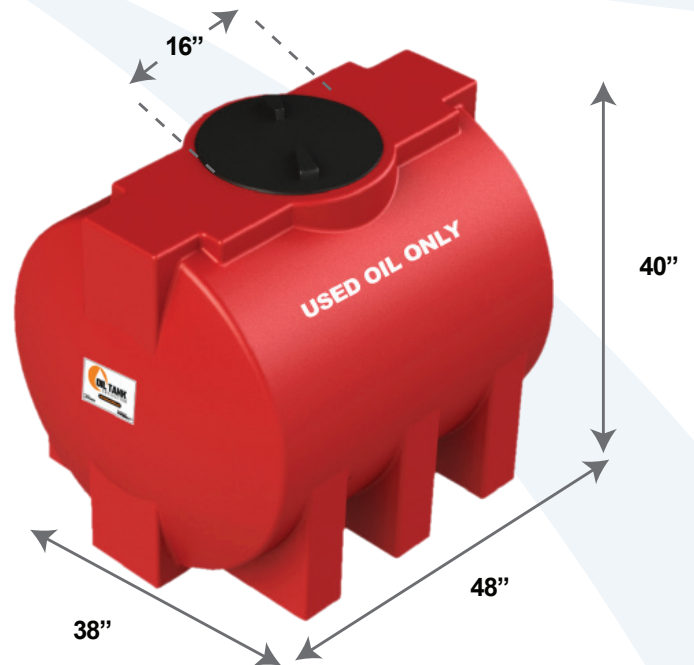
100% Polyethylene, U.V. stabilized to ensure resistance to weather and corrosion.

#### 16" FILTER BASKET

To prevent debris from entering the tank

#### 2" OUTLET

Included for quick emptying



**LENGTH** 48.00" | 121.92 cm

**HEIGHT** 40.00" | 101.60 cm

**WIDTH** 38.00" | 96.52 cm

**CAPACITY** 225 gal | 851.72 L

**OUTLET** 2.00" | 5.08 cm



# **RHINO**

**Low Profile** **SEPTIC TANK**

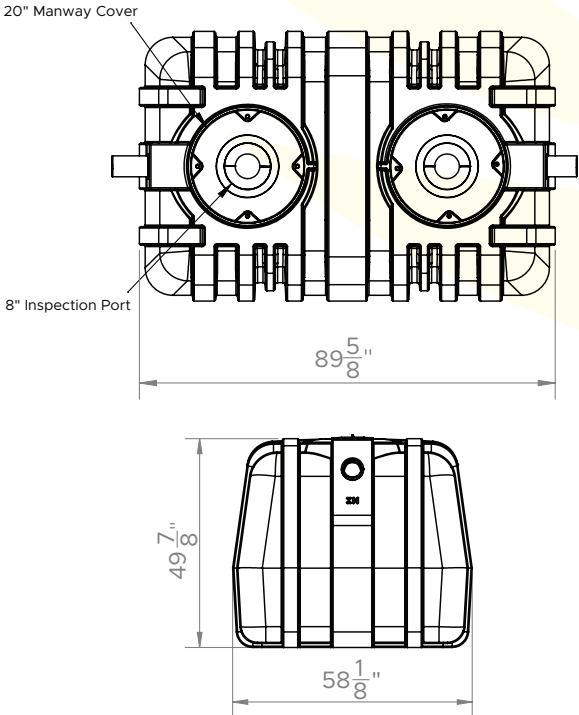


**10** **YEAR**  
WARRANTY

# RHINO

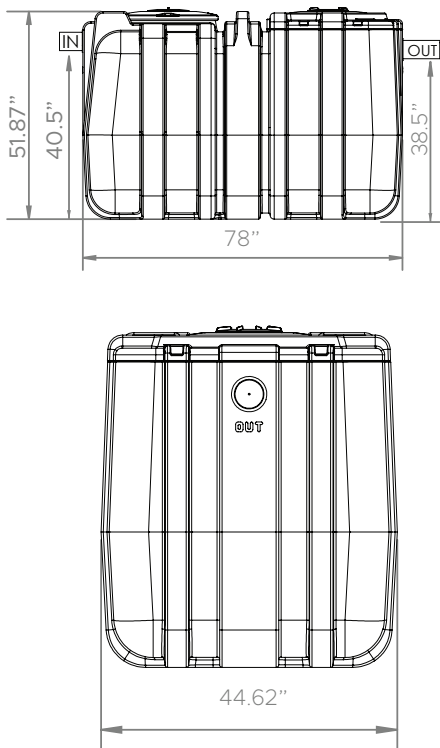
Low Profile **SEPTIC TANK**

## 750 & 500 GAL LP SEPTIC TANK



### RHINO

**750** GAL Low Profile **SEPTIC TANK**



### RHINO

**500** GAL Low Profile **SEPTIC TANK**



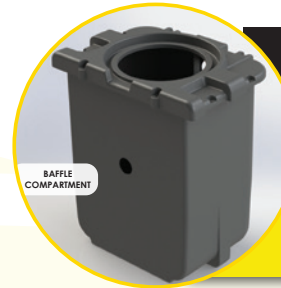
## DUO Dual Compartment

### Dual Compartment Benefits

**i** Wastewater enters through the inlet into the first chamber of the tank. The wastewater settles, creating 3 layers.

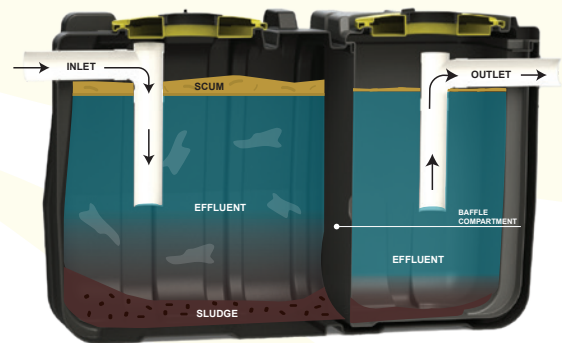
Microbes, naturally present in the wastewater, then break down the waste particles in the effluent. Sludge sinks to the bottom, scum rises to the top and effluent remains in the middle zone.

The treated effluent passes through the baffle wall and enters the second chamber. Another cycle of settling takes place in the second chamber before the effluent exits the tank through the outlet.



Why Choose a 2-Compartment Septic Tank?

It acts as a barrier to turbulence within the tank. It minimizes the likelihood of solids exiting the tank and clogging the soakaway.



### LOW PROFILE SEPTIC TANK FEATURES



Resistant to cracking:  
Rhino Septic Tanks are designed to withstand earth's pressure that would crack traditional concrete tanks.



Heavily ribbed for added rigidity and strength:  
When properly installed Rhino Tanks will outlast traditional concrete tanks.



Resistant to most chemicals and compounds:  
Rhino Septic Tanks are completely unaffected by any soil or sewage based substance or particles.



Lightweight and compact:  
No heavy lifting equipment needed for installation.



Environmentally friendly:  
Due to its seamless construction, Rhino Septic Tanks prevent untreated waste from entering the environment.

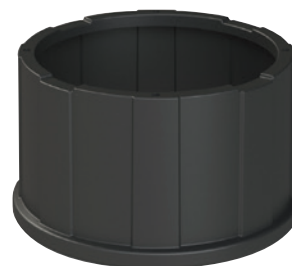
### ACCESSORIES (Sold Separately)

#### 12" Risers

- Designed to allow above ground access for regularly scheduled maintenance.

#### Effluent Filter

- Prevents solid waste particles from exiting the tank with the treated effluent.



12" Riser

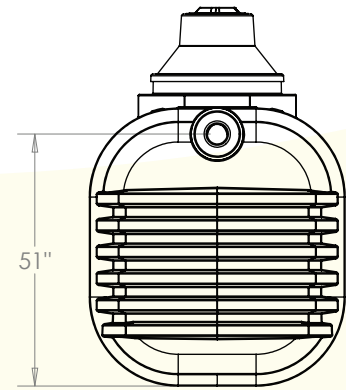


Effluent Filter

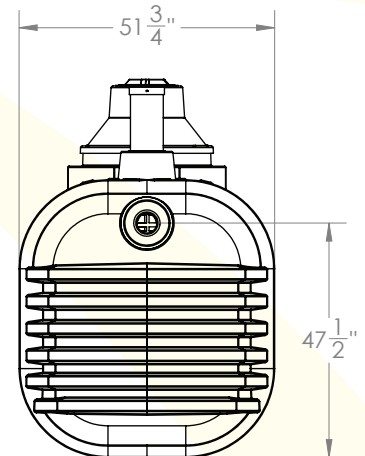
# RHINO<sup>®</sup>

## SEPTIC TANK

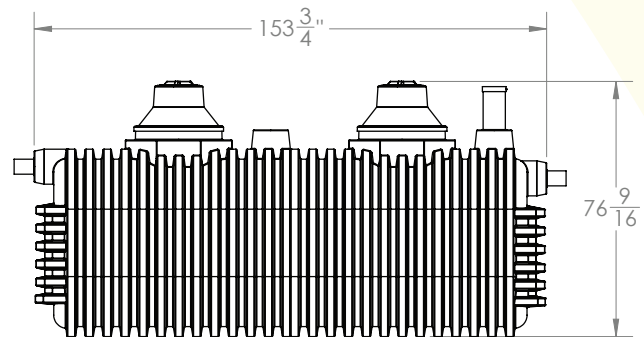
**1500 GAL  
SEPTIC TANK**



Side View - Inlet



Side View - Outlet



Front View



**Resistant to cracking:**  
Rhino Septic Tanks are designed to withstand earth's pressure that would crack traditional concrete tanks.



**Heavily ribbed for added rigidity and strength:**  
When properly installed Rhino Tanks will outlast traditional concrete tanks.



**Resistant to most chemicals and compounds:**  
Rhino Septic Tanks are completely unaffected by any soil or sewage based substance or particles.



**Lightweight and compact:**  
No heavy lifting equipment needed for installation.



**Environmentally friendly:**  
Rhino Septic Tanks prevent untreated waste from entering the environment.



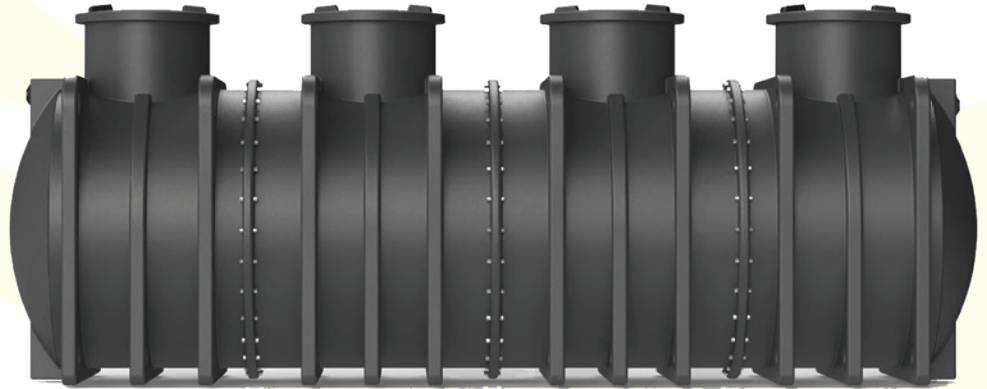
# MODULAR TREATMENT UNIT

AVAILABLE BY ORDER

MODULAR  
TREATMENT UNIT

## FEATURES

- Heavily ribbed for added rigidity and strength
- Anchoring bolsters
- Lifting eyes
- Lightweight and easy to handle and install



MODULE	CAPACITY	DIMENSIONS ( L x W x H)	WEIGHT
Middle	392 Gal	44" x 56" x 68"	440 lbs. / 199 kgs
End	346 Gal	45½" x 56" x 68"	680 lbs. / 308 kgs

Modules can be welded or bolted together to create larger capacities for various functions such as:

### SEDIMENTATION CHAMBER

Allows the separation of solids from liquids into 3 distinct layers (Sludge, Scum and Effluent).

### ANAEROBIC CHAMBER

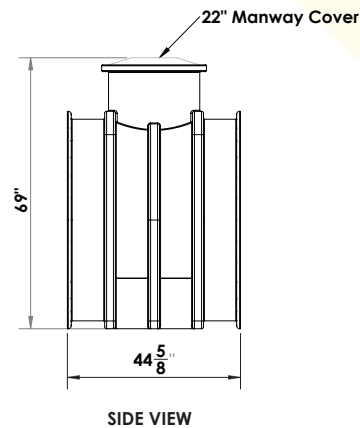
Utilizes aeration methods to enhance the growth of aerobic bacteria. Oxygen is required to provide the necessary conditions for the bacteria to grow and treat the wastewater effectively.

### AEROBIC CHAMBER

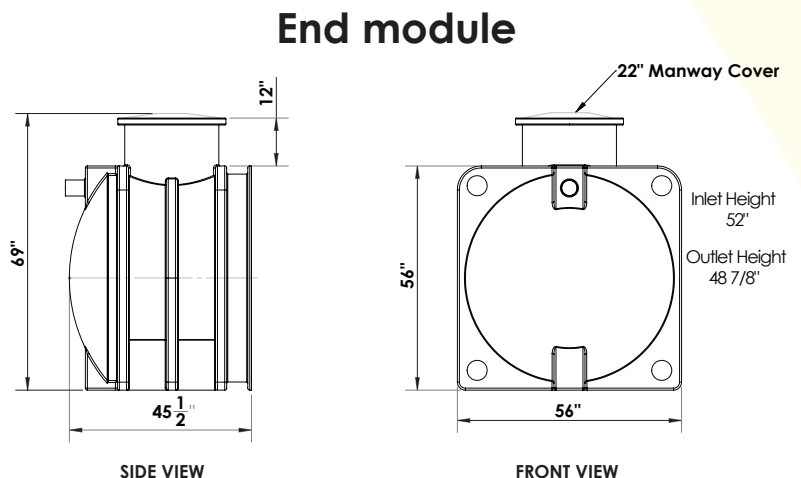
Utilizes bio-balls to provide a large surface area for the bacteria to grow. The anaerobic process takes place in the absence of oxygen allowing anaerobic bacteria to breakdown organic matter.

### RECIRCULATION CHAMBER

This chamber includes a recirculating unit which redirects the treated effluent back to the beginning of the process. The recirculation mechanism significantly enhances the overall treatment efficiency.



Middle module



End module

# FAT BOY

SEPTIC TANKS



BACKED BY A **10** YEAR  
MANUFACTURER'S WARRANTY

300 GAL DIMENSIONS	
H	D
67.75 in	56.50 in
172.09 cm	143.50 cm
WEIGHT	USERS
90 lbs	3
40 kg	
500 GAL DIMENSIONS	
H	D
80.00 in	67.00 in
203.20 cm	170.18 cm
WEIGHT	USERS
135 lbs	5
61 kg	



## SEPTIC TANK FEATURES:

Rotationally molded HDPE for super strength ensuring higher durability

Its seamless spherical design gives it a structural strength that resists deformation

Lightweight compared to concrete septic tanks

Designed for quick and easy transport and installation

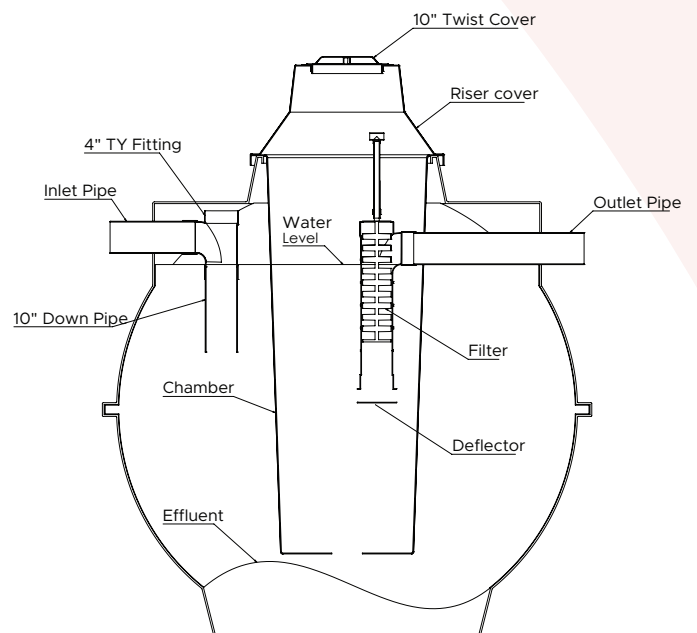
Environmentally safe

Fully recyclable material

Non-corrosive

Ideal for residential and commercial applications

Single and double compartment options available





## EXTERNAL DIMENSIONS

L	W	H
87.63 in	51.25 in	67.38 in
222.58 cm	130.18 cm	171.14 cm

WEIGHT	USERS
400.6 lbs	8
181.71 kg	



**Resistant to cracking:**  
FatBoy Septic Tanks are designed to withstand earth's pressure that would crack traditional concrete tanks.



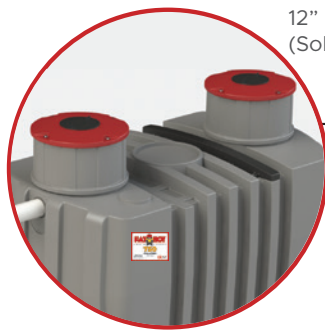
**Heavily ribbed for added rigidity and strength:**  
When properly installed FatBoy Tanks will outlast traditional concrete tanks.



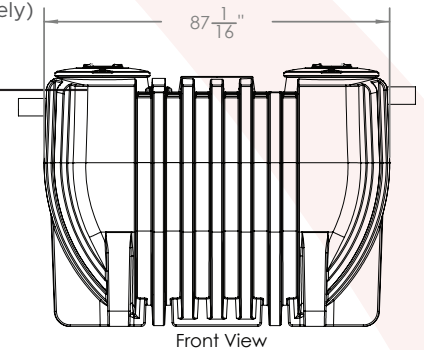
**Leak proof.** FatBoy septic tanks seamless Rotomolded design ensures that no waste will escape your tank.



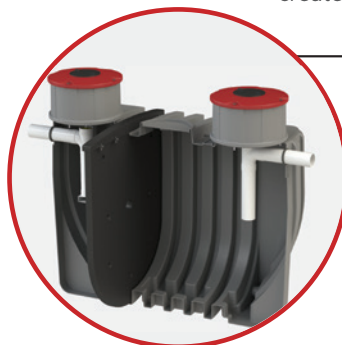
**Lightweight and compact:**  
No heavy lifting equipment needed for installation.



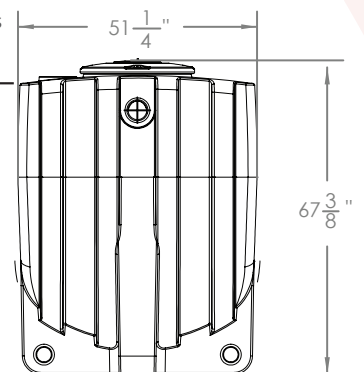
12" Riser  
12" H x 20" W  
(Sold separately)



Front View



Baffle and Filter  
Customizable to  
create 2-3 chambers



Side View

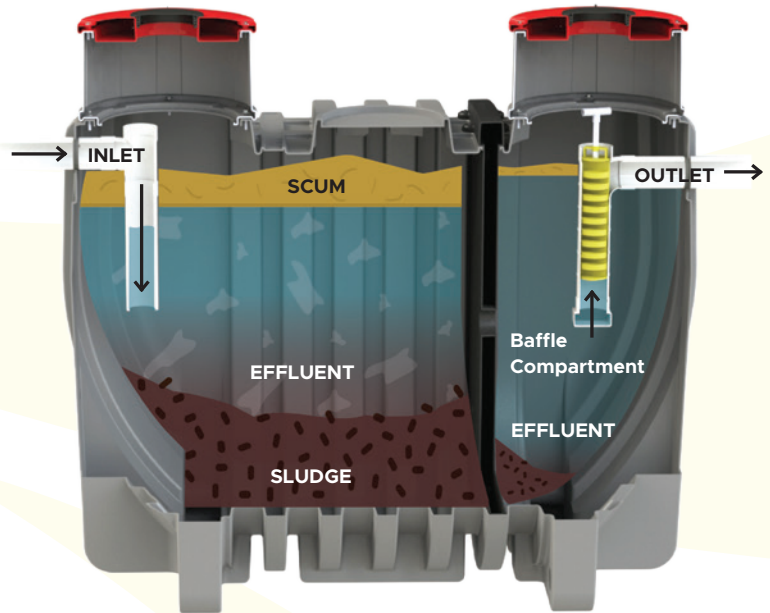




Wastewater enters through the inlet into the first chamber of the tank. The wastewater settles, creating 3 layers.

Microbes, naturally present in the wastewater, then break down the waste particles in the effluent. Sludge sinks to the bottom, scum rises to the top and effluent remains in the middle zone.

The treated effluent passes through the baffle wall and enters the second chamber. Another cycle of settling takes place in the second chamber before the effluent exits the tank through the outlet.



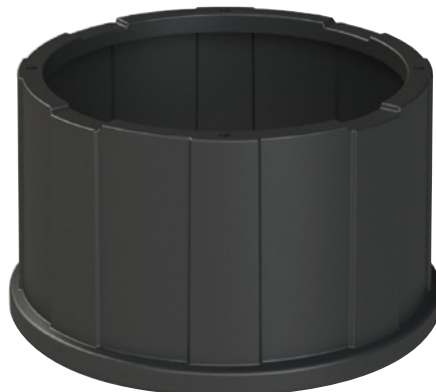
## ACCESSORIES (Sold Separately)

- **Effluent Filter**  
Prevents solid waste particles from exiting the tank with the treated effluent.



**Effluent Filter**

- **12" Risers**  
Designed to allow above ground access for regularly scheduled maintenance.



**12" Riser**



## PRODUCT BENEFITS:

Leak proof, seamless constructed tank, manufactured from prime-grade polyethylene that provides exceptional strength and durability with impact-resistant properties.

Lightweight, easy to handle and install yet durable and sturdy to withstand the most rigorous applications of the plumbing industry. Includes a fully integrated surface guaranteed not to corrode, chip or peel, unlike some metal, fiberglass or other specially treated material. Trap is furnished with NPT connections and flow diffusing baffles.

## DIMENSIONS

CAPACITY	LENGTH	WIDTH	HEIGHT	WEIGHT
30 US Gallons (114 litres)	32½ in 83 cm	22 in 56 cm	18 in 46 cm	32 lbs 14.5 kgs
225 US Gallons (851 litres)	49 in 125 cm	38.5 in 97 cm	39½ in 101 cm	106 lbs 48 kgs

## WHAT IS A GREASE TRAP?

A grease trap is designed to capture fat oil, greases as well as food solids coming from a restaurant, or food production facility.

## HOW DOES IT WORK?

A grease trap works by slowing down the flow of hot greasy water, allowing it to cool with the fats and oils separating, solidifying and rising to the top of the tank by use of baffles inside the tank. The hardened grease is then prevented from passing through the drain lines. Food solids settle to the bottom of the trap.



# STA-RITE<sup>®</sup> PUMPS



**2** **YEAR**  
WARRANTY

 **PENTAIR STA-RITE**

## Quality Construction

Fiberglass reinforced thermoplastic body provides total corrosion resistance and high resistance to abrasion

## Built-in Jet

Shallow-well jet has corrosion-resistant polypropylene nozzle and venturi

## Precision-Molded Diffuser

Polypropylene diffuser allows pump to prime faster and handle more air.

## Dual Voltage Capability

110/220 V

## New Nozzle Cleanout

Easy plug removal and access for ease of service

## New Drain Plug Bottom

Mounted for easy draining and winterisation

## Both PN & SN Series feature:



## Built-in Jet

High-strength Lexan nozzle and venturi for maximum resistance to corrosion and abrasion. Cleanout plug provided for ease of service.

## Precision-Molded Diffuser

Pump primes faster, handles more air, with multi-port, precision-molded, reinforced polypropylene diffuser.

## Motor Windings

Superior insulation materials protect against excessive moisture and contaminants...assure prolonged motor life.

## Balanced Rotor

Die-cast under high pressures for uniform performance and greater efficiency, dynamically balanced.

## Dustproof cover

All electrical components are protected from dirt, dust and insects by a dust proof canopy; ventilating air cannot contaminate vital switching components.

## Mechanical Shaft Seal

Precision lapped and highly polished carbon-ceramic, stainless steel construction. Internal design guarantees continuous water lubrication.



## PN SERIES | SELF-PRIMING JET PUMP

### SPECIFICATIONS:

**Body and Seal Plate:** Fiberglass-reinforced thermoplastic

**Heavy-Duty Motor:** Stainless steel shaft and dual heavy-duty ball bearings

**Impeller:** Engineered polymer

**Base:** 12-gauge steel

MODEL	MAX GPM	MAX OP PRESSURE	VOLT	HP	Suction	Discharge
PNC	7	73 psi	115/230 v	0.5	1-1/4"	1"
PND	10	78 psi	115/230 v	0.75	1-1/4"	1"
PNE	15	67 psi	115/230 v	1.0	1-1/4"	1"

### APPLICATIONS

Water Systems, Booster Pump, Marine Use, Mist Sprayers – Poultry, Fountains and Water Features



## SN SERIES | SELF-PRIMING JET PUMP

### SPECIFICATIONS:

**Body:** Close-grained cast iron

**Heavy-Duty Motor:** Stainless steel shaft and dual heavy-duty ball bearings.

**Impeller:** Noryl®

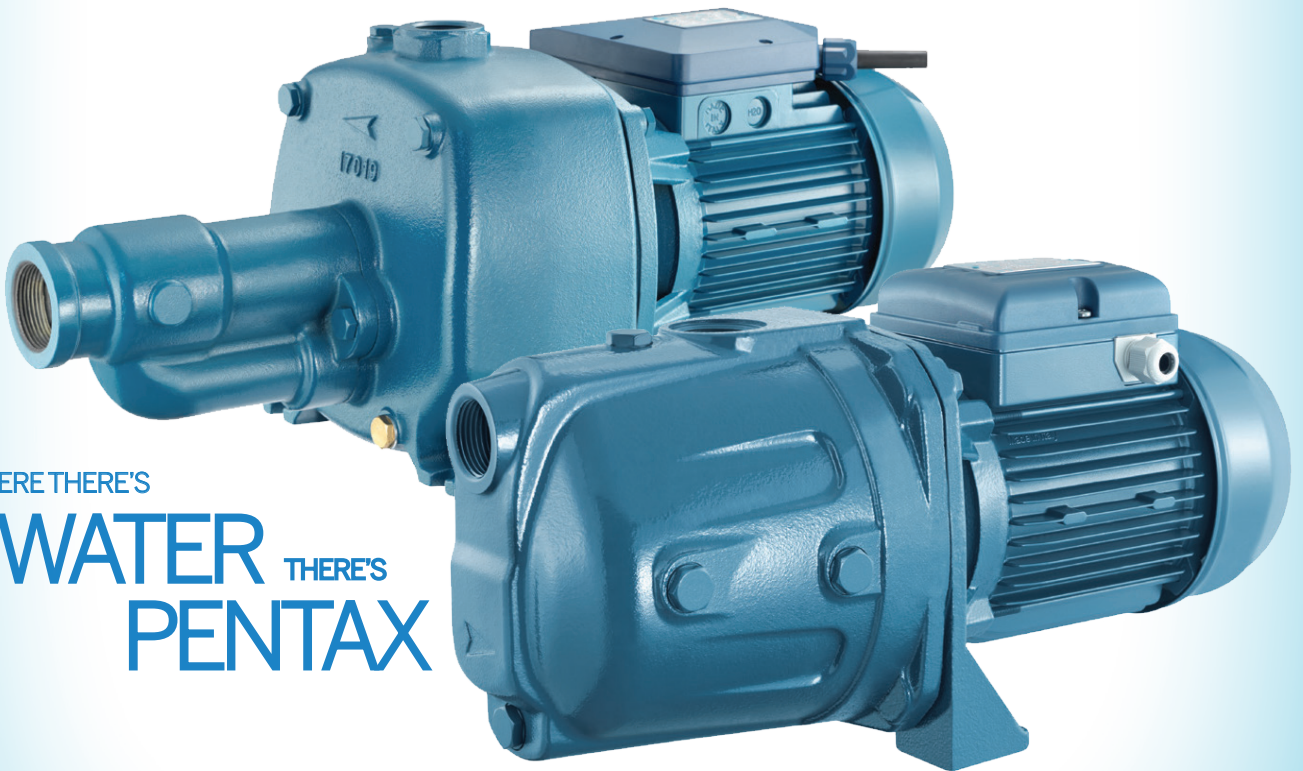
**Base:** 12-gauge steel

MODEL	MAX GPM	MAX OP PRESSURE	VOLT	HP	Suction	Discharge
SNC	9	70 psi	115/230 v	0.5	1.25"	1"
SND	14	70 psi	115/230 v	0.75	1.25"	1"
SNE	23	67 psi	115/230 v	1.0	1.25"	1"
SNF	27	67 psi	115/230 v	1.5	1.25"	1"

### APPLICATIONS

Water systems and sprinkling ,for homes, farms and cottages





WHERE THERE'S  
**WATER** THERE'S  
**PENTAX**

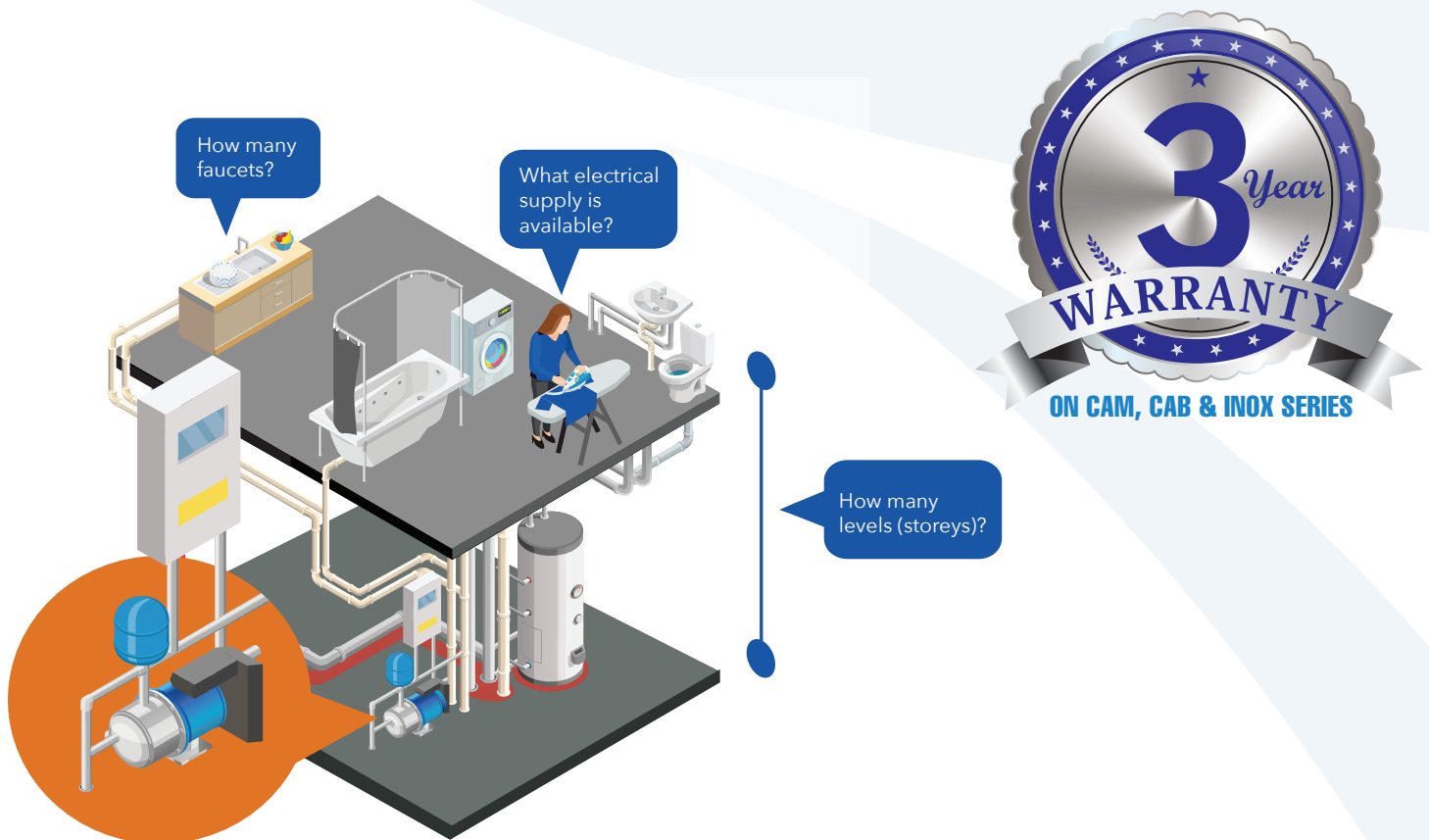
**PROUD EXCLUSIVE DISTRIBUTOR FOR PENTAX IN THE CARIBBEAN REGION.**



## WARRANTY DETAILS

Rotoplastics Trinidad Limited extends the following Limited Warranty to the ORIGINAL OWNER of PENTAX water pumps for a period of three (3) years, excluding the Pentax PM 45 pump, automatic pump control (smarthead) and pressure tank, which will be warranted for a period of one (1) year, free of defects from workmanship and materials, commencing on the date of original purchase of the product. All Pentax pumps should be installed with a surge protector to safeguard against voltage fluctuations. This warranty is in lieu of implied warranties of merchantability of fitness. These items will be warranted for the unexpired portion of the original warranty.

The warranty is nontransferable and is valid only if fitted to the manufacturer's recommended application and properly installed. ALL necessary paperwork must be properly completed, retained by the customer and presented for processing warranty claims.



Single storey home  
with (2) two baths.  
 $\frac{1}{2}$  hp or  $\frac{3}{4}$  hp centrifugal pump



Two storey home  
with (3) three baths.  
 $\frac{3}{4}$  hp or 1 hp centrifugal pump

Pentax is present in over

# 100 COUNTRIES WORLDWIDE

## SELF-PRIMING (Centrifugal) PUMP

Self-priming centrifugal pump for supplying water in small household systems, transferring liquids, emptying tanks and gardening. This pump can be connected to a pressure tank or smarthead.

Pump body			Impeller		
Cast Iron			Noryl ®		
MODEL	MAX GPM	MAX OP PRESSURE	VOLT	HP	FREQ Hz
CAM 100	18	72 psi	110 v	1.0	60
CAM 75	16	67 psi	110 v	0.8	60
CAM 50	16	58 psi	110 v	0.6	60

*Available in 50 Hz by order*

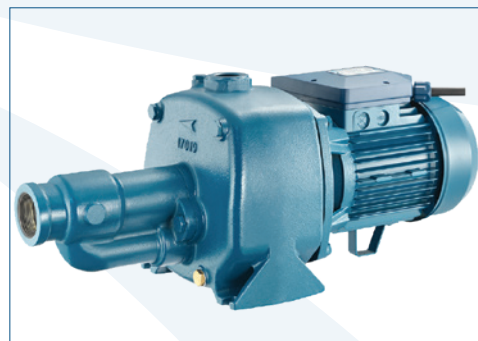


## SELF-PRIMING (Centrifugal) PUMP

Self-priming centrifugal pump for supplying water in medium households and light commercial systems; the use of a pressure switch and pressure tank are strongly recommended for automatic operation.

Pump body			Impeller		
Cast Iron			Noryl ®		
MODEL	MAX GPM	MAX OP PRESSURE	VOLT	HP	FREQ Hz
CAB 200	29	88 psi	220 v	2.0	60
CAB 150	24	86 psi	220 v	1.5	60

*Available in 50 Hz by order*



## PERIPHERAL PUMP/ TRANSFER PUMP

Peripheral positive displacement pump with frontal suction for water transfer and simple industrial applications; characterised by a considerable ratio between performance and required output.

Pump body			Impeller		
Cast Iron/Brass			Brass		
MODEL	MAX GPM	MAX OP PRESSURE	VOLT	HP	FREQ Hz
PM 45	10	57 psi	110 v	0.5	60

*Available in 50 Hz by order*



## SUBMERSIBLE DRAINAGE PUMP (with float switch)

Drainage pump for emptying pits and cisterns, for gardening; completely constructed in anti-corrosive material; brass insert on the delivery opening.

Pump body			Impeller		
Polypropylene			Technopolymer		
MODEL	MAX GPM	IMMERSION DEPTH	VOLT	HP	FREQ Hz
DP	16	5 Meters	110 v	0.3	60





**NEW**

# INOX SERIES

## 1/2 HP - 1HP

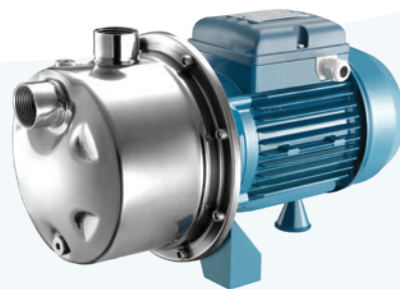


**STAINLESS STEEL  
FRONT CASING**

### SELF-PRIMING (Centrifugal) PUMP

Self-priming centrifugal pump for domestic applications such as domestic systems where air is mixed with water. Recommended in combination with pressure set for water transfer and irrigation systems.

Pump body			Impeller		
Stainless Steel AISI 304			Noryl ®		
MODEL	MAX GPM	MAX OP PRESSURE	VOLT	HP	FREQ Hz
INOX 100N	17	8 Bar	110 v	1.0	60
INOX 80N	13	8 Bar	110 v	0.8	60
INOX 50	13	8 Bar	110 v	0.6	60







## BRASS CONNECTORS

A fitting mounted to the discharge of the pump which allows installations of pump accessories such as a pressure switch, pressure gauge & pressure tank. Available in 3 & 5 way.



## PRESSURE SWITCH

These open or close electrical contacts in response to changes in pressure. Starts and stops the pump. For residential, commercial and agricultural applications. Max psi 0 - 220 psi. Available in male or female connection.



## FLOAT SWITCH (TUFF)

A device used to detect the level of liquid within a tank. It protects your pump from running without water. Cord length 5m & 10m. Voltage 110 - 220, 15 A.



## PRESSURE GAUGE

A device that indicates the amount of pressure that your pump is producing, usually expressed as pounds per square inch (psi). Available in 6 & 12 bar. Glycerine filled or unfilled; radial or axial stem. Pressure gauge bore 1/4 inch.

## PRESSURE TANKS



A pressure tank in a water system is designed to have extra gallons of water on reserve (under pressure) so small demands don't require the pump to switch on and off. An example is turning on a faucet for a few seconds to get a glass of water. Pressure tanks are available in fixed and replaceable bladder designs. Fixed bladder type cannot be repaired if you have a defective bladder. Please note: if using a pressure tank with your pump, a float switch is required to protect the pump from running dry and burning the motor.

SPECIFICATIONS		
CAPACITY		ORIENTATION
8 L	2.0 Gal	VERTICAL
18 L	5.0 Gal	VERTICAL
50 L	13.25 Gal	VERTICAL
100 L	26.5 Gal	VERTICAL
200 L	53.0 Gal	VERTICAL
300 L	80.0 Gal	VERTICAL
500 L	132.0 Gal	VERTICAL
50 L	13.25 Gal	HORIZONTAL
100 L	26.50 Gal	HORIZONTAL

All sizes listed come with a 10 BAR/ 145 PSI max operating pressure rating. The 200 - 500 LIT Pressure Tanks are also available in 16 BAR/ 235 PSI for high pressure applications.





Specifically designed for Pentax water pumps with smarthead fittings. It protects the pump against harsh weather conditions. Assembly components included (nuts & bolts, screws & allen key).



### REPLACEMENT ACCESSORIES



#### PENTAX REPAIR KIT

The repair kit consists of a mechanical and ceramic seal & two bearings.



#### COELBO DIAPHRAGM

The diaphragm acts as a barrier between the water and the air when pressurization takes place in your pump.



#### PENTAX CAPACITOR

A device in the pump which stores an electric charge, consisting of one or more pairs of conductors separated by an insulator. Available in different values based on pump size.



#### ZILMET BLADDER

Replaceable Bladder Membrane for use with pressure tanks.



#### PENTAX IMPELLER

A rotating component of a pump. The size of the impeller varies with the pump size. Made from Noryl<sup>®</sup> compound that prevents wear. Only suitable with clear water use to prevent clogging.

Compact, non-adjustable electronic device that automatically controls the operation of the pump. It replaces a pressure tank, pressure switch and float switch. Immediate automatic shut-off in the absence of water, requires little to no maintenance and includes a tactile push button for manual start.



### COMPACT 2

Electronic pump controller through internal flow and pressure sensors with an small internal accumulation membrane. Automatic reset. Inlet and outlet at 180 degrees. Optionally adjustable starting pressure.

#### FEATURES

- Reset button
- Replaceable circuit board
- Fault Light
- Small reserve against leaks
- Automatic Reset Test (ART function)



### CONTROL PUMP

Electronic pump controller through internal flow and pressure sensors with internal accumulation membrane. Inlet and outlet at 90 degrees.

#### FEATURES

- Reset button
- Replaceable circuit board
- Manual Reset





# STIEBEL ELTRON

## TANKLESS WATER HEATERS





# STIEBEL ELTRON

## TANKLESS WATER HEATERS

### Superior water heating

All Stiebel Eltron water heaters are manufactured in Germany. Each unit is individually tested for performance before it leaves our factory. Stiebel Eltron heaters the most advanced electric tankless technology, impressive energy saving performance, and incredible reliability.



#### Savings up to 20%

Compared to storage tanks, Stiebel Eltron tankless heaters save up to 20% on electricity.



#### No ventilation required

Unlike gas units, DCE requires no ventilation, so it can be installed anywhere.



#### Saves space

Its compact size allows residents to regain several cubic meters in space that a tank heater requires.



#### Saves water

Due to its size and elegant design, these heaters can be installed near the point of use, greatly reducing water waste.



#### Advanced heating system

The advanced technical system, supplies hot water naturally with a rapid heating response time.



#### Unlimited hot water

DCE and Temptra heaters heat the water instantly, providing constant hot water without any interruption.



#### Easy installation

The compact design and flat back panel allows for an easy and attractive installation.



#### Earthquake proof

Not subject to building regulations for seismic activity, as is the case with tank heaters.



#### No Combustion or flame

The DCE uses electricity, a safe energy source. There is no gas, no flame, no need for ventilation.



#### Safety systems

Anti-scalding system and high temperature limit protection. With the addition of UL / ETL certification.



## 3 YEAR WARRANTY

# STIEBEL ELTRON

## TANKLESS WATER HEATERS

## TANKLESS WATER HEATERS

### DCE TREND

#### Features

Electronic temperature control

Triple AE3 security system

Low pressure function

Works as a reinforcement for other systems

Model	DCE 10 TREND			DCE 15 TREND		
Phase 60/50 Hz						
Voltage	208 V	220 V		208V	220V	240V
Stage 1 Wattage	5.4 kW	6.0 kW		9.0 kW	10.0 kW	12.0 kW
Amperage	25.8 A	27.3 A		43.3 A	45.5 A	50.0 A
Stage 2 Wattage	7.2 kW	8.0 kW		10.7 kW	12.0 kW	14.4 kW
Amperage	34.4 A	36.4 A		51.6 A	54.5 A	60.0 A
Required circuit breaker <sup>1</sup>	40 A			60 A		
Wire size, <sup>2</sup> AWG Copper	8			6		
Minimum water flow to activate unit	1.0 l/min(0.264 gpm)					
Weight	2.5kg(5.5lbs)					
Nominal water volume	0.277 l (0.07 gal)					
Max. inlet water temp.	55°C(131 °F)					
Dimensions	W 217 mm (8 9/16 in.) x H 372 mm (14 5/8 in.) x D 109 mm (4 5/16 in.)					
Max. working pressure	1MPa(145psi)					
Water connections	½ in. NPT					



Intelligent Control

**2i** 2 SENSORS  
ELECTRONIC REGULATION  
OF TEMPERATURE

Efficiency/Comfort

●●● / ●●●

Temperature Adjustment 50 °C Fixed

### DCE PREMIUM

#### Features

Electronic temperature control

Triple AE3 security system

Low pressure function

Works as a reinforcement for other systems

Temperature selection knob

Multi functional LCD display

Advanced Flow Control™

2 Temperature memory buttons

Energy savings calculator

Model	DCE 10 PREMIUM			DCE 15 PREMIUM		
Phase 60/50 Hz	1					
Voltage	208 V	220 V	240 V	208V	220V	240V
Stage 1 Wattage	5.4 kW	6.0 kW	7.2 kW	9.0 kW	10.0 kW	12.0 kW
Amperage	25.8 A	27.3 A	30.0 A	43.3 A	45.5 A	50.0 A
Stage 2 Wattage	7.2 kW	8.0 kW	9.6 kW	10.7 kW	12.0 kW	14.4 kW
Amperage	34.4 A	36.4 A	40.0 A	51.6 A	54.5 A	60.0 A
Required circuit breaker <sup>1</sup>	40 A			60 A		
Wire size, <sup>2</sup> AWG Copper	8			6		
Minimum water flow to activate unit	1.0 l/min(0.264 gpm)					
Weight	2.5kg(5.5lbs)					
Nominal water volume	0.277 l (0.07 gal)					
Max. inlet water temp.	55°C(131 °F)					
Dimensions	W 217 mm (8 9/16 in.) x H 372 mm (14 5/8 in.) x D 109 mm (4 5/16 in.)					
Max. working pressure	1MPa(145psi)					
Water connections	½ in. NPT					



Intelligent Control

**4i** 4 SENSORS  
ELECTRONIC REGULATION  
OF TEMPERATURE

Efficiency/Comfort

●●● / ●●●

Temperature Adjustment 20-60 °C  
Via LCD Display

# STIEBEL ELTRON

## TANKLESS WATER HEATERS

## TANKLESS WATER HEATERS

### TEMPRA TREND 20

#### Features

Self Modulating Energy Technology  
Exclusive Advanced Flow Control  
No Venting Required  
Unlimited Hot water Supply

Model	TEMPRA TREND 20
Phase	Single 60/50 Hz
Voltage	208 V 240 V
Wattage	19.2kW 14.4 kW
Amperage	2 x 30 A 2 x 35 A
Required circuit breaker <sup>1</sup>	2 x 30 A 2 x 35 A
Wire size, <sup>2</sup> AWG Copper	2 x 8/2
Minimum water flow to activate unit	1.9 L/min (0.5 gpm)
Weight	7.3kg (16.1lbs)
Nominal water volume	1.0 L (0.26 gal)
Max. inlet water temp.	55°C (131 °F)
Dimensions	W 420 mm (16 5/8 in.) x H 369 mm (14 1/2 in.) x D 117 mm (4 5/8 in.)
Min. working pressure	2 bar (30 psi)
Water connections	3/4in. NPT



### TEMPRA TREND 20

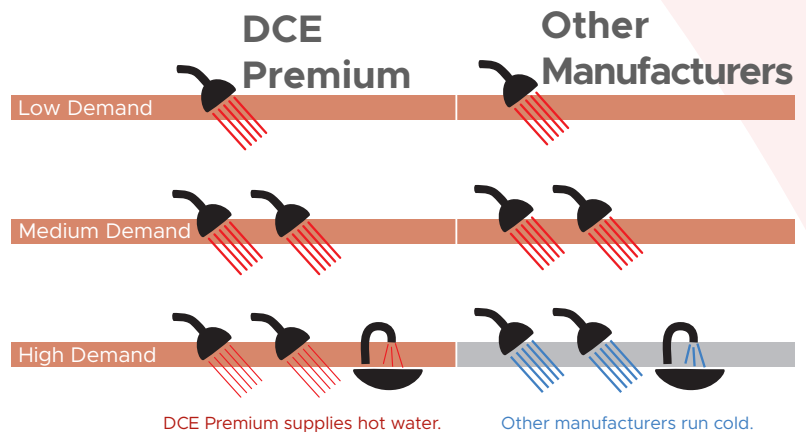
Provides continuous hot water on demand	✓
Saves energy with auto-modulation	✓
Digital display for accurate temperature setting	✓
Solid copper heating chambers	✓
Smart microprocessor technology for steady temperature with variable flow	✓
Made in Germany	✓



### Advanced Flow Control™

Advanced Flow Control™ in DCE Premium models automatically reduces the flow of water slightly if hot water demand is too great.

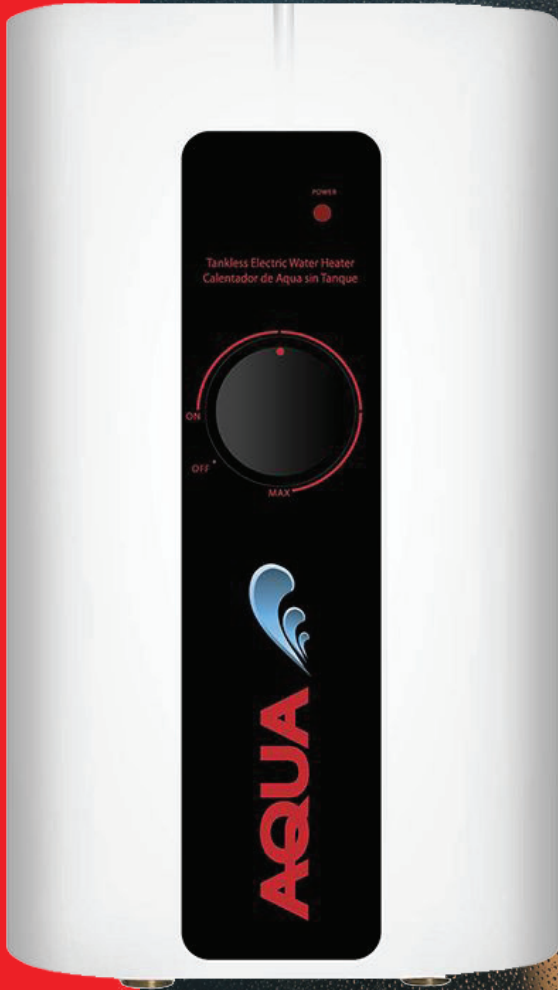
DCE Premium never delivers colder water than the set point, but always delivers water at the correct temperature.



Stiebel Eltron has been the world leader in the development of advanced water heating and energy-saving technology since 1924. Our pursuit of engineering excellence and high-quality manufacturing results in products fulfilling the highest expectations of performance and reliability.



# AQUA POWER





## DH Tankless Electric Water Heaters

Heats up to 2 water outlets simultaneously

### Technical Data

**ISO 9001**  
CERTIFIED



Specifications subject to change without notice.  
Our goal is to always provide the most advanced technology.

Model <sup>1</sup>	DH 100
Item No.	234029
Design	Pressure type
Current	Single phase - 60/50 Hz
220 V	8.4 KW/38 A
230 V	9.2 KW/40 A
240 V	10.0 KW/42 A
Circuit breaker size <sup>2</sup>	50 A
Wire gauge <sup>3</sup> Copper	6
Minimum flow rate to activate unit	0.92 gpm / 3.5 l/min
Max. working pressure	150 psi / 10 bar
Nominal water volume	0.13 gal / 0.5 l
Weight	4.4 lb / 2.0 kg
Dimensions	13¾" H x 7¼" W x 3¾" D
Plumbing connections	G ½"

<sup>1</sup> Suitable for supply with cold water.

<sup>2</sup> Unit is only activated when a hot water tap is opened.

<sup>3</sup> Conductors should be sized to maintain a voltage drop of less than 3% under load.

\* Only certain models



**GERMAN ENGINEERING**



### Electricity Savings

Since there is no tank, the stand by losses of a tank water heater are eliminated saving atleast 15-20%.

### Saves space

Compact size occupies considerable less space than a conventional tank heater.

### Saves water

Can be installed near the point of use, greatly reducing water waste.

### Endless hot water

Providing constant hot water supply without interruption.

### Easy installation

The compact design allows easy and attractive installation.

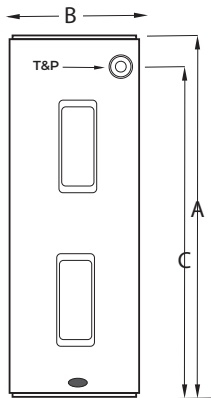
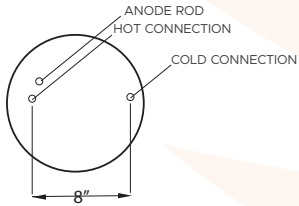
### Electricity not Gas

Uses electricity, There is no gas, no flame, no need for ventilation.



**state**  
WATER HEATERS





## DIFFUSER DIP TUBE

Helps reduce lime and sediment buildup and maximizes hot water output. Made of State PEXAN™, a cross-linked PEX polymer that can withstand long-term exposure to water temperatures up to 400°F.



## ENHANCED HEATING SYSTEM

Uses electricity to move heat from one place to another instead of generating heat directly. Therefore, they can be two to three times more energy efficient than conventional electric water heaters.



## ENERGY STAR

Save energy and fight climate change with this ENERGY STAR certified product. It uses less energy so you save money, and help protect the environment.



## BLUE DIAMOND GLASS COATING

State residential electric water heaters have the toughest protection against rust and corrosion to maximize tank life. State blue diamond glass coating provides superior corrosion resistance compared to the industry standard glass lining.



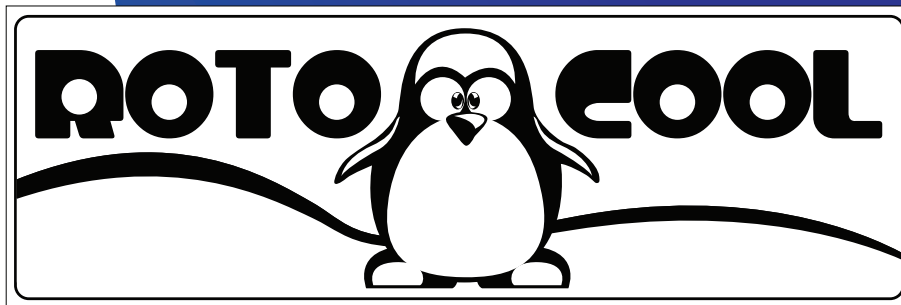
## CoreGuard ANODE ROD

Our anode has a stainless steel core that extends the life of the anode rod, allowing superior tank protection far longer than standard anode rods.

STATE WATER HEATER			
MODEL	SIZE	DIMENSIONS	HEATING CAPACITY
Compact Model	10 Gal.	18.25"H x 16"D	1 water outlet
Junior Model	20 Gal.	25"H x 18"D	1-2 water outlets
Tall Model	30 Gal.	46.5"H x 18"D	2-3 water outlets
Short Model	30 Gal.	39"H x 20"D	2-3 water outlets
Tall Model	40 Gal.	59.5"H x 18"D	3-4 water outlets
Short Model	40 Gal.	47.5"H x 20"D	3-4 water outlets
Short Model	50 Gal.	48"H x 21.5"D	4-5 water outlets
Tall Model	50 Gal.	54"H x 20.5"D	4-5 water outlets
Tall Model	66 Gal.	66.25"H x 22"D	5-6 water outlets
	80 Gal.	64.5"H x 26"D	6-8 water outlets
Voltage	KW	Breaker Size	Wiring
220 V	4.5 KW	30 amp	4MM2

# 6 YEAR WARRANTY

6 YEARS ON BODY. 1 YEAR ON PARTS.



Designed to keep things

# COLDER LONGER

Rotocool coolers feature impact resistant construction and are industrial grade. They are rotationally molded from tough polyethylene to withstand rigorous environments and is ideal for the storage of cold and warm products, events and much more. The double-walled foam filled insulation maintains a consistent internal temperature for prolonged periods. Rotocool coolers are manufactured with Food and Drug Administration (FDA) compliant material for the storage of food and beverages.

#### FEATURES:



Rotationally  
Molded



Durable  
Rubber Latches



UV Resistant



Leak-proof



6 DAY  
Ice Retention

# 5

YEAR  
GUARANTEE

Manufactured with Food and Drug  
Administration compliant materials.





# BEVERAGE MERCHANDISER



## EXTERNAL DIMENSIONS

L	W	H
22.75 in	26 in	37.25 in
57.78 cm	66 cm	94.61 cm

## INTERNAL DIMENSIONS

L	W	H
15.50 in	15.75 in	21.00 in
39.37 cm	40.00 cm	53.34 cm

## WEIGHT

## CAPACITY

BOX	COVER	ICE	WATER
28 lbs	8 lbs	117 lbs	20 Gal
12.7 kg	3.6 kg	53.0 kg	76 L



*\*Additional Colours available upon request*



6 storage  
Hooks



Rugged  
8" wheels



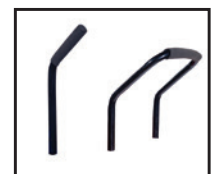
Drain plug



Grip for  
Lifting



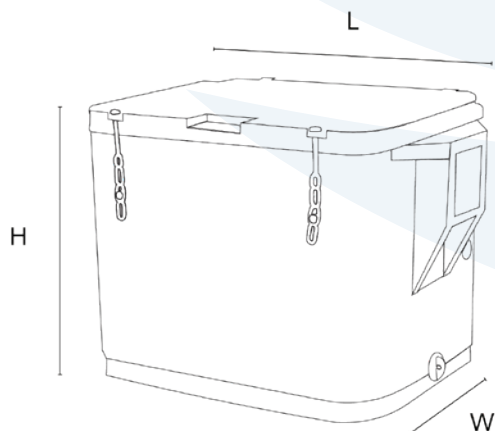
Rubber  
Bumper



Single or  
Double handle



# THE PUB R250



## EXTERNAL DIMENSIONS

L	W	H
41.63 in	26.38 in	29.38 in
105.74 cm	67 cm	74.62 cm

## INTERNAL DIMENSIONS

L	W	H
30.13 in	22.63 in	24.75 in
76.53 cm	57.48 cm	62.86 cm

## WEIGHT

## CAPACITY

BOX	COVER	ICE	WATER
54 lbs	14 lbs	247.5 lbs	66 Gal
24.5 kg	6.4 kg	112.3 kg	249.83 L



*\*Additional Colours available upon request*



Rotomolded  
Handles



Optional  
Hinged cover



Drain plug



Rubber  
Latches



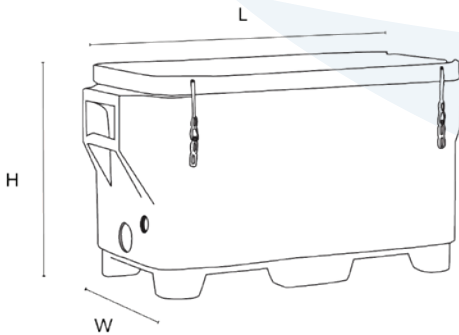
Up to 2" inch  
thick insulation



Optional Forklift/  
Wheeled Based



# THE LONG BOX R375



## EXTERNAL DIMENSIONS

L	W	H
59.75 in	26.75 in	33.13 in
151.76 cm	67.94 cm	84.15 cm

## INTERNAL DIMENSIONS

L	W	H
48.38 in	22.88 in	22.50 in
122.88 cm	58.11 cm	57.15 cm

## WEIGHT

## CAPACITY

BOX	COVER	ICE	WATER
100 lbs	27 lbs	412.5 lbs	99 Gal
45.4 kg	12.2 kg	187.1 kg	374.75 L



*\*Additional Colours available upon request*



Rotomolded  
Handles



Drain plug



Rubber  
Latches



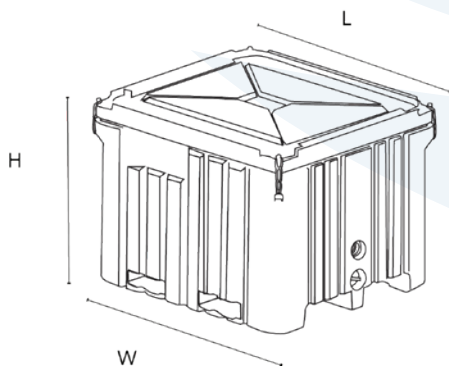
Up to 4" inch  
thick insulation



Fork Lift  
Entry



# THE XTREME R715



## EXTERNAL DIMENSIONS

L	W	H
47.50 in	42.50 in	36 in
120.65 cm	107.95 cm	91.44 cm

## INTERNAL DIMENSIONS

L	W	H
43.25 in	38.50 in	26.63 in
109.85 cm	97.79 cm	67.64 cm

## WEIGHT

## CAPACITY

BOX	COVER	ICE	WATER
146 lbs	36 lbs	742.5 lbs	189 Gal
66.2 kg	16.3 kg	337 kg	715.4 L



*\*Additional Colours available upon request*



Drain plug



Rubber  
Latches



Up to 3" inch  
thick insulation

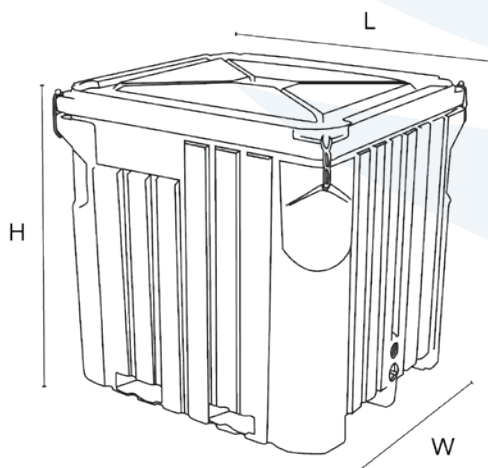


Fork Lift  
Entry





# KING KONG 1100



## EXTERNAL DIMENSIONS

L	W	H
47.50 in	42.50 in	48.25 in
120.65 cm	107.95 cm	122.55 cm

## INTERNAL DIMENSIONS

L	W	H
43.25 in	38.50 in	39.75 in
109.85 cm	97.79 cm	100.96 cm

## WEIGHT

## CAPACITY

BOX	COVER	ICE	WATER
180 lbs	36 lbs	1155 lbs	289 Gal
81.6 kg	16.3 kg	532.9 kg	1094 L



*\*Additional Colours available upon request*



Drain plug



Rubber  
Latches



Up to 3" inch  
thick insulation



Fork Lift  
Entry

## FEATURES

- Strong rotationally moulded construction
- Smooth surface
- Guaranteed to last
- Durable and light weight
- Easy to clean and maintain
- Holds up to 170/850 gallons of water
- U.V resistant for outdoor application
- 2" drain plug which allows water to be easily drained
- Anti-corrosive material
- Stackable
- Easy for shipment and transportation



DIMENSIONS		CAPACITY
D	H	
83.5 in	49 in	850 Gal
212.09 cm	124.46 cm	3218 L
DIMENSIONS		CAPACITY
D	H	
83.5 in	49 in	170 Gal
212.09 cm	124.46 cm	643 L

Aquaculture Tanks are used extensively for breeding and raising: fish, shrimp, crab and other marine animals. The FDA compliant polyethylene is safe and non-toxic to aquatic life.

The Aquaculture Tank design eliminates shadows which scare fish and therefore minimizes stress to the fish, causing them to be more productive, healthy and active.

Because of its superior engineering design properties, they are durable, crack resistant and guaranteed to last in tough environments.



Stackable for easy  
transport



2" bulkhead



Tuff Lip

# POND LINER

## DESCRIPTION

A permanent fish pond liner that will withstand a variety of weather and water conditions. Great for landscaping.

## FEATURES

Manufactured from FDA compliant polyethylene

Will not rust, corrode or bend out of shape even when fully loaded

UV resistant

DIMENSIONS		CAPACITY
D	H	
44.25 in	10.25 in	56 Gal
112.40 cm	26.04 cm	212 L



Available Colours

# TUFF PLUNGE



5 YEAR Guarantee



Indoor & Outdoor Use



100% Recyclable



Rotationally Molded



UV Resistant



Linear Low-Density Polyethylene

## 100 GAL ICE BATH TUB

### FEATURES

Corrosion & Rust Resistant  
Optional Bulk Head fitting for drainage



Available Colours

Get organized with our Heavy Duty Stacking Trays which are ideal for transport and storage applications.

Can be used in freezers or pantries to classify various refrigerated items and raw food materials such as meat, seafood, potatoes, onions and more.



## FEATURES

Environmentally friendly and made from a durable plastic material

Made of FDA compliant material 100% virgin polyethylene, making it safe for food storage for home, commercial and industrial use

Easy lift off lid for ease of access

Ergonomic rim provides for a sturdy grip making it convenient for you to lift from any position

Smooth surfaces that are easy to clean

UV resistant to most chemicals and solvents

It can be stacked to save space when not in use



## DIMENSIONS

SIZE	WIDTH	HEIGHT	LENGTH	L / Gals
Small	15"	6½"	24½"	34/9.5
Medium	15½"	11"	27½"	68/17
Large	18"	13"	35"	132/35





## **SUSTAINABLE WASTE MANAGEMENT PRODUCTS**

Rhino Waste Solutions a division of Rotoplastics (Trinidad) Limited, provides sustainable waste management solutions for your disposal needs, with specifications to meet industry standards.

Our products, Rhino Garbage Bags, Garbage Bins & Material Handling (Tilt and Tote Trucks) are proudly manufactured in the Caribbean for over two decades. Over the years they have earned the reputation of the #1 Brand in the English Speaking Caribbean.

Rhino Garbage Bags are offered in both retail and industrial packaging. It ranges from frosted recycling bags, green organic waste bags and black general refuse bags. They are made of High Density Polyethylene (HDPE) and Low Density Polyethylene (LDPE) resin for reliable, consistent quality.

Rhino Garbage Bins & Material Handling are rotationally moulded to ensure uniform wall thickness and high stability. They are made of specially formulated UV resistant Linear Low Density Polyethylene (LDPE) for toughness, corrosion resistance and weather protection, making them perfect for indoor/outdoor use. This process produces a 100% recyclable product, doubling the environmental benefits. They are backed by a 5 year guarantee but have earned a reputation of lasting decades!

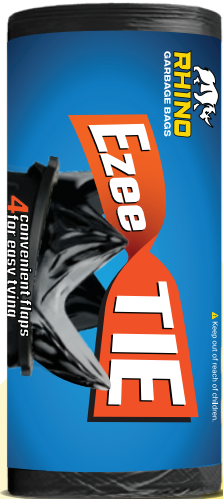
We continue to evolve technologically to optimize our production process and our product range, resulting in a quality finished product.

Rhino Waste Solutions is your trusted partner in sustainable waste management products. Join us in the adventure today!



# RHINO

## GARBAGE BAGS



## 55gallon DRUM LINER

>> 55 Gallons | 208 Litres  
 96.5 x 152.4 cm | 38 x 60 inches  
 8 rolls of 25 bags | 200 bags per case



### IDEAL FOR:



OFFICES



HOTELS



RESTAURANTS



RECYCLING



# Recycling FROSTED Bags

## RHINO RECYCLING BAGS

### SMALL



<b>UNIT SIZE</b>	20 X 22 in   51 X 56 cm
<b>THICKNESS</b>	0.5 mil   12.7 micron
<b>CASE PACKAGE</b>	12 rolls / 50 bags
<b>CAPACITY</b>	30 L   8 Gal
<b>MATERIAL</b>	HDPE

### MEDIUM



<b>UNIT SIZE</b>	24 X 36 in   61 X 92 cm
<b>THICKNESS</b>	0.6 mil   15.24 micron
<b>CASE PACKAGE</b>	12 rolls / 30 bags
<b>CAPACITY</b>	57 L   15 Gal
<b>MATERIAL</b>	HDPE

### LARGE



<b>UNIT SIZE</b>	30 X 36 in   76 X 92 cm
<b>THICKNESS</b>	0.6 mil   15.24 micron
<b>CASE PACKAGE</b>	12 rolls / 30 bags
<b>CAPACITY</b>	100 L   26 Gal
<b>MATERIAL</b>	HDPE

### JUMBO



<b>UNIT SIZE</b>	38 X 50 in   96 X 127 cm
<b>THICKNESS</b>	1.0 mil   25.4 micron
<b>CASE PACKAGE</b>	12 rolls / 10 bags
<b>CAPACITY</b>	175 L   46 Gal
<b>MATERIAL</b>	HDPE



**RHINO  
BIO BAGS**

## SMALL



<b>UNIT SIZE</b>	20 X 22 in   51 X 56 cm
<b>THICKNESS</b>	0.5 mil   12.7 micron
<b>CASE PACKAGE</b>	12 rolls / 40 bags
<b>CAPACITY</b>	30 L   8 Gal
<b>MATERIAL</b>	HDPE

## MEDIUM



<b>UNIT SIZE</b>	24 X 36 in   61 X 92 cm
<b>THICKNESS</b>	0.6 mil   15.24 micron
<b>CASE PACKAGE</b>	12 rolls / 25 bags
<b>CAPACITY</b>	57 L   15 Gal
<b>MATERIAL</b>	HDPE

## LARGE



<b>UNIT SIZE</b>	30 X 36 in   76 X 92 cm
<b>THICKNESS</b>	0.6 mil   15.24 micron
<b>CASE PACKAGE</b>	12 rolls / 25 bags
<b>CAPACITY</b>	1000 L   26 Gal
<b>MATERIAL</b>	HDPE

## JUMBO



<b>UNIT SIZE</b>	38 X 50 in   96 X 127 cm
<b>THICKNESS</b>	1.0 mil   25.4 micron
<b>CASE PACKAGE</b>	12 rolls / 10 bags
<b>CAPACITY</b>	175 L   46 Gal
<b>MATERIAL</b>	HDPE





## RHINO EZEE PULL BAGS

### SMALL



<b>UNIT SIZE</b>	20 X 22 ins   51 X 56 cm
<b>THICKNESS</b>	0.5 mil   12.7 micron
<b>CASE PACKAGE</b>	12 rolls / 50 bags
<b>CAPACITY</b>	30 L   8 Gal
<b>MATERIAL</b>	HDPE

### MEDIUM



<b>UNIT SIZE</b>	24 X 36 ins   61 X 92 cm
<b>THICKNESS</b>	0.6 mil   15.24 micron
<b>CASE PACKAGE</b>	12 rolls / 30 bags
<b>CAPACITY</b>	57 L   15 Gal
<b>MATERIAL</b>	HDPE

### LARGE



<b>UNIT SIZE</b>	30 X 36 ins   76 X 92 cm
<b>THICKNESS</b>	0.6 mil   15.24 micron
<b>CASE PACKAGE</b>	12 rolls / 30 bags
<b>CAPACITY</b>	100 L   26 Gal
<b>MATERIAL</b>	HDPE

### JUMBO



<b>UNIT SIZE</b>	38 X 50 ins   96 X 127 cm
<b>THICKNESS</b>	1.0 mil   25.4 micron
<b>CASE PACKAGE</b>	12 rolls / 10 bags
<b>CAPACITY</b>	175 L   46 Gal
<b>MATERIAL</b>	HDPE



## RHINO EZEE TIE BAGS

### SMALL



<b>UNIT SIZE</b>	20 X 22 ins   51 X 56 cm
<b>THICKNESS</b>	0.5 mil   12.7 micron
<b>CASE PACKAGE</b>	12 rolls / 30 bags
<b>CAPACITY</b>	30 L   8 Gal
<b>MATERIAL</b>	HDPE

### MEDIUM



<b>UNIT SIZE</b>	24 X 36 ins   61 X 92 cm
<b>THICKNESS</b>	0.6 mil   15.24 micron
<b>CASE PACKAGE</b>	12 rolls / 20 bags
<b>CAPACITY</b>	57 L   15 Gal
<b>MATERIAL</b>	HDPE

### LARGE



<b>UNIT SIZE</b>	30 X 36 ins   76 X 92 cm
<b>THICKNESS</b>	0.6 mil   15.24 micron
<b>CASE PACKAGE</b>	12 rolls / 20 bags
<b>CAPACITY</b>	100 L   26 Gal
<b>MATERIAL</b>	HDPE

# 55gallon DRUM LINER

**RHINO  
DRUM LINER**



## IDEAL FOR:



OFFICES



HOTELS



RESTAURANTS



RECYCLING



55 Gallons  
96.5 x 152.4 cm

208 Litres  
38 x 60 inches






8 rolls of 25 bags

200 bags per case



# RHINO GARBAGE BINS

Rhino Garbage Bins are rotationally moulded to ensure uniform wall thickness and high stability. They are made of specially formulated UV resistant Linear Low Density Polyethylene (LDPE) for toughness, corrosion resistance and weather protection, making them perfect for indoor/outdoor use. This process produces a 100% recyclable product, doubling the environmental benefits. They are backed by a 5 year guarantee but have earned a reputation of lasting decades!

				
100% Recyclable	UV Resistant	Rotationally Molded	Linear Low-Density Polyethylene	Indoor & Outdoor Use



**5**  
YEAR  
GUARANTEE



**STRENGTH**  
YOU CAN DEPEND ON!



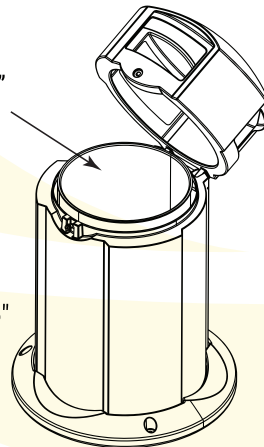


## GUPPY GARBAGE BIN



**Inner Liner**  
Diameter 21"  
Height 36"

**45 Gal**  
Diameter: 35"  
Height: 52"



**LONG LIFESPAN**  
Commercial-grade construction plus UV protection

**DURABLE**  
Can withstand adverse weather conditions and are corrosion, rust and chip resistant

**HEAVY-DUTY LINER**  
Easily removable, smooth inner liner makes cleaning easier and quicker

**DOMED LID**  
Enables surface runoff and deters users from leaving waste on top of the bin

**IDEAL GARBAGE BAG SIZE**  
38" x 50"

**3-WAY TOP**  
Making it easier to dispose of your trash

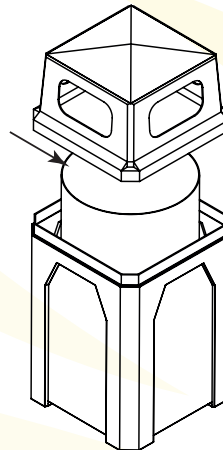
**AVAILABLE IN**  
45 Gal (170 Liters)

## MIGHTY GARBAGE BIN



**Inner Liner**  
Diameter 22"  
Height 32"

**45 Gal**  
Length: 20"  
Width: 26"  
Height: 48"



**LONG LIFESPAN**  
Commercial-grade construction plus UV protection

**DURABLE**  
Can withstand adverse weather conditions and are corrosion, rust and chip resistant

**HEAVY-DUTY LINER**  
Easily removable, smooth inner liner makes cleaning easier and quicker

**SLOPED CONVEX TOP**  
Enables surface runoff and deters users from leaving waste on top of the bin

**IDEAL GARBAGE BAG SIZE**  
38" x 50"

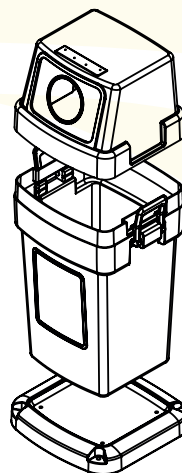
**CUSTOMIZABLE (3 STEPS)**  
Custom Graphics-All 4 sides  
1. Choose your bin color  
2. Submit your artwork using the provided template/dimensions  
3. Choose labels: Paper, Plastic or Trash

## RECYCLE GARBAGE BIN



**30 Gal**  
Length: 18"  
Width: 23"  
Height: 43"

**45 Gal**  
Length: 20"  
Width: 26"  
Height: 48"



**LONG LIFESPAN**  
Commercial-grade construction plus UV protection

**DURABLE**  
Can withstand adverse weather conditions and are corrosion, rust and chip resistant

**COMMERCIAL OR RESIDENTIAL USE**  
Suitable for both indoor and outdoor

**ROUND WASTE ENTRY**  
The cover offers a stationary 6" entry

**STACKABLE DESIGN**  
To maximize space when shipping

**LOCKING HANDLES**  
Heavy-duty handles locks the lid firmly into position

**OPTIONAL SECURE BASE**  
Can be bolted to the ground (Bolts not included) minimizing theft, vandalism and movement during heavy winds

**CUSTOM GRAPHICS**  
By special order via your sales rep

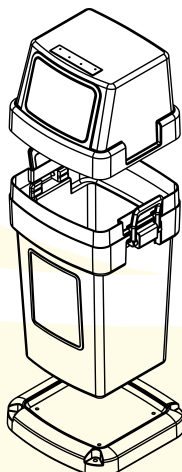
**IDEAL GARBAGE BAG SIZE**  
30 Gal - 33" x 37" | 45 Gal - 38" x 46"

## SWINGER GARBAGE BIN



**30 Gal**  
Length: 18"  
Width: 23"  
Height: 43"

**45 Gal**  
Length: 20"  
Width: 26"  
Height: 48"



**LONG LIFESPAN**  
Commercial-grade construction plus UV protection

**DURABLE**  
Can withstand adverse weather conditions and are corrosion, rust and chip resistant

**COMMERCIAL OR RESIDENTIAL USE**  
Its sleek design is ideal for both indoor and outdoor

**PUSH FLAP LID**  
Swings easily, smoothly and firmly, ensuring bin contents are properly concealed

**STACKABLE DESIGN**  
To maximize space when shipping

**LOCKING HANDLES**  
Heavy-duty handles for easy mobility also locks the lid firmly into position

**OPTIONAL SECURE BASE**  
Can be bolted to the ground (Bolts not included) minimizing theft, vandalism and movement during heavy winds

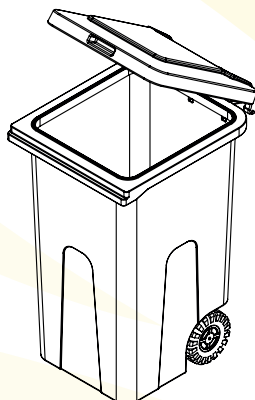
**IDEAL GARBAGE BAG SIZE**  
30 Gal - 33" x 37" | 45 Gal - 38" x 46"

## WHEELIE GARBAGE BIN



**30 Gal**  
Length: 22"  
Width: 20"  
Height: 38"

**60 Gal**  
Length: 36"  
Width: 31"  
Height: 46"



**LONG LIFESPAN**  
Commercial-grade construction plus UV protection

**DURABLE**  
Can withstand adverse weather conditions and are corrosion, rust and chip resistant

**DURABLE WHEELS**  
Solid Wheels with high performance treads are optimized for use indoors and outdoors

**HINGED LID**  
Opens fully and stays in place allowing easy accessibility to remove your trash

**STACKABLE DESIGN**  
To maximize space when shipping

**ERGONOMIC REAR HANDLE**  
Designed for comfortable push or pull operations when empty or full

**RHINO RIM**  
Creates a strong and sturdier rim, enhances the finish and appearance of the product

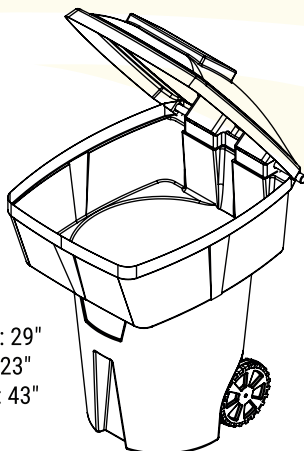
**IDEAL GARBAGE BAG SIZE**  
30 Gal - 33" x 37" | 45 Gal - 38" x 46"

**AVAILABLE IN**  
30 Gal (114 L) | 60 Gal (227 L) | 90 Gal (341 L)

## WHEELIE GARBAGE BIN



**90 Gal**  
Length: 29"  
Width: 23"  
Height: 43"



**LONG LIFESPAN**  
Commercial-grade construction plus UV protection

**DURABLE**  
Can withstand adverse weather conditions and are corrosion, rust and chip resistant

**DURABLE WHEELS**  
Solid Wheels with high performance treads are optimized for use indoors and outdoors

**HINGED LID**  
Opens fully and stays in place allowing easy accessibility to remove your trash

**STACKABLE DESIGN**  
To maximize space when shipping

**ERGONOMIC REAR HANDLE**  
Designed for comfortable push or pull operations when empty or full

**RHINO RIM**  
Creates a strong and sturdier rim, enhances the finish and appearance of the product

**IDEAL GARBAGE BAG SIZE**  
30 Gal - 33" x 37" | 45 Gal - 38" x 46"

**AVAILABLE IN**  
30 Gal (114 L) | 60 Gal (227 L) | 90 Gal (341 L)





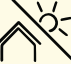


GRANITE BLUE GRANITE GREEN GRANITE GREY GRANITE RED



Rhino Material Handling are rotationally moulded to ensure uniform wall thickness and high stability. They are made of specially formulated UV resistant Linear Low Density Polyethylene (LLDPE) for toughness, corrosion resistance and weather protection, making them perfect for indoor/outdoor use. This process produces a 100% recyclable product, doubling the environmental benefits. They are backed by a 5 year guarantee but have earned a reputation of lasting decades!



				
100% Recyclable	UV Resistant	Rotationally Molded	Linear Low-Density Polyethylene	Indoor & Outdoor Use



## TOTE TRUCK

**LONG LIFESPAN**  
Commercial-grade construction plus UV protection

**DURABLE**  
Can withstand adverse weather conditions and are corrosion, rust and chip resistant

**ROBUST WHEELS**  
4" castors (2 swivel and 2 non-swivel)

**OPTIONAL HINGED LID**  
Hinged Lid allows easy access to contents without removal and conceals loads without decreasing capacity  
Available only for 100 Gallon Tote Truck

**FRAMES**  
Powder-coated to reduce corrosion, prevent flaking and ensure long service life

**STEEL PUSH HANDLE**  
Designed for comfortable push or pull operations when empty or full

**RHINO RIM**  
Creates a strong and sturdier rim, enhances the finish and appearance of the product

**EASY TO CLEAN**  
Smooth surfaces and seamless construction makes cleaning easier and quicker



The cover is only available in Black.

## TILT TRUCK

**LONG LIFESPAN**  
Commercial-grade construction plus UV protection

**DURABLE**  
Can withstand adverse weather conditions and are corrosion, rust and chip resistant

**ROBUST WHEELS**  
4" castors (2 swivel and 2 non-swivel)

**OPTIONAL HINGED LID**  
Hinged Lid allows easy access to contents without removal and covers without decreasing capacity

**FRAMES**  
Powder-coated to reduce corrosion, prevent flaking and ensure long service life



**STEEL PUSH HANDLE**  
Designed for comfortable push or pull operations when empty or full

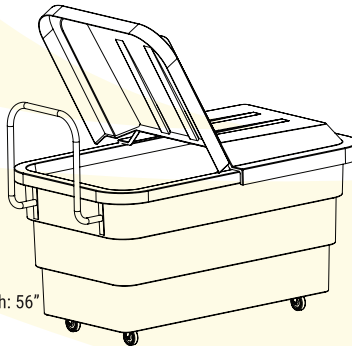
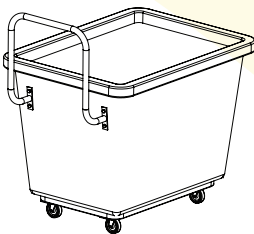
**RHINO RIM**  
Creates a strong and sturdier rim, enhances the finish and appearance of the product

**EASY TO CLEAN**  
Smooth surfaces and seamless construction makes cleaning easier and quicker



The cover is only available in **Black**.


**100 Gallon**  
**Total height**  
(To top of handle) 43"

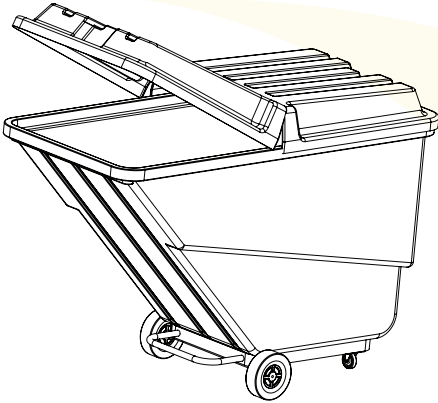
**Body**  
Length: 53"  
Width: 30"  
Height: 31"

**Cover**  
Unfolded length: 56"  
Width: 30"  
Height: 6"

**60 Gallon**  
**Total height**  
(To top of handle) 41"

**Body**  
Length: 37"  
Width: 28"  
Height: 30"





**1.0 cu. yd.**  
**Total height**  
(To top of lid) 49"

**Body**  
Length to handle: 74"  
Width: 32"  
Height: 43"

**Cover**  
Unfolded length: 75"  
Width: 34"  
Height: 9"





**ISLAND**  
**PLANTERS**



# BEAUTIFY YOUR INDOOR AND OUTDOOR SPACES!



Our planters are manufactured using specially formulated UV resistant polyethylene to guarantee high impact strength and durability.

Each pot is crafted using the rotational molding technique achieving an unbreakable high quality product. They are also backed by a 5 year guarantee against cracking and chipping.

## Special product features



**Unbreakable**



**UV Resistant**



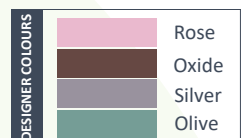
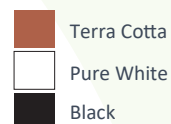
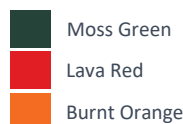
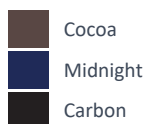
**Lightweight**



**5 Year Guarantee**



**Indoor or Outdoor use**





# MODERN COLLECTION



Cylindro



Quattro



Vivo



Rectangular



Bola

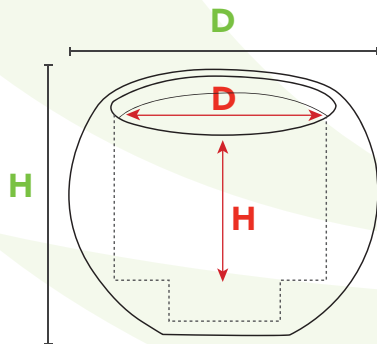


Tuff



Copa





## Self Watering

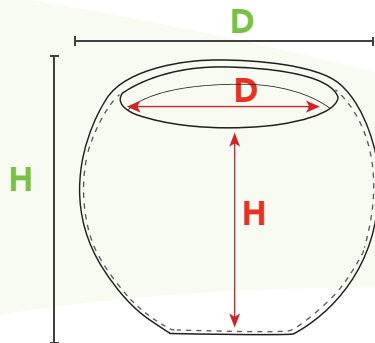
External Dimensions			Internal Dimensions			
	D x H (in)	D x H (cm)	D x H (in)	D x H (cm)	lbs	kg
12"	11.75 x 09.37	29.80 x 23.80	8.19 x 6.00	20.90 x 15.20	3	1.3
18"	17.62 x 13.75	44.75 x 34.92	12.25 x 10.00	31.11 x 25.40	6	2.7
22"	21.50 x 17.12	54.61 x 43.48	14.50 x 12.75	36.83 x 32.38	10	4.5
24"	24.80 x 19.50	63.00 x 49.53	16.75 x 14.75	42.54 x 37.46	14	6.4
30"	29.50 x 23.50	74.90 x 59.7	19.62 x 17.75	45.09 x 45.10	22	10.0
36"	35.12 x 27.50	89.20 x 69.85	24.00 x 20.62	60.96 x 52.37	36	16.3



### BOLA SERIES

**SW**

[MATTE]



## Non Self Watering

External Dimensions			Internal Dimensions			
	D x H (in)	D x H (cm)	D x H (in)	D x H (cm)	lbs	kg
23"	23.00 x 17.75	58.42 x 45.09	15.50 x 17.75	39.37 x 45.09	10	4.6
29"	29.25 x 23.12	74.29 x 58.72	20.00 x 23.12	50.80 x 58.72	17	7.7
35"	35.25 x 28.00	89.53 x 71.12	24.00 x 28.00	60.96 x 71.12	28	12.7



### BOLA SERIES

[MATTE]

NS







## COPA SERIES



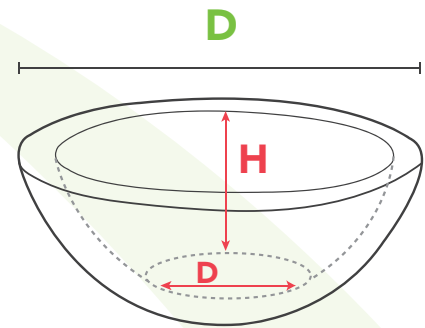
[MATTE]



External Dimensions			Internal Dimensions			
	D x H (in)	D x H (cm)	D x H (in)	D x H (cm)	lbs	kg
24"	24.50 x 11.50	62.23 x 29.21	11.25 x 90.00	28.57 x 22.86	9	4.1
35"	35.00 x 16.50	88.90 x 41.91	10.00 x 14.50	25.4 x 36.83	17	7.3
47"	47.00 x 22.00	119.38 x 55.88	24.00 x 16.50	60.96 x 41.91	47.5	21.5

No saucer available

H



## COPA TIP!

Use any size COPA to create a terrific planter, water feature or your favourite succulent garden.

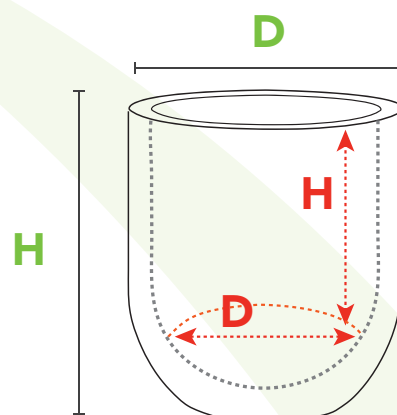


## CYLINDRO SERIES [MATTE]

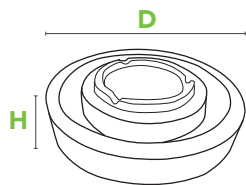


External Dimensions			Internal Dimensions			
	D x H (in)	D x H (cm)	D x H (in)	D x H (cm)	lbs	kg
10"	10.00 x 11.00	27.90 x 25.40	8.00 x 7.00	20.30 x 17.80	3	1.3
14"	13.65 x 15.25	34.67 x 38.73	10.50 x 10.50	26.67 x 26.67	5	2.3
16"	15.50 x 17.25	39.37 x 43.81	12.00 x 12.62	30.48 x 32.05	7	3.2
18"	17.50 x 19.25	44.45 x 48.89	13.25 x 15.12	33.65 x 38.40	9	4.1
23"	22.50 x 24.62	57.15 x 62.53	17.25 x 19.25	43.81 x 48.89	18	8.2
29"	29.12 x 31.87	73.96 x 80.94	22.00 x 23.75	55.89 x 60.32	35	16

10" SW



Saucer sold separately



Saucer Dimensions/ Dimensiones del plato				
	D x H (in)	D x H (cm)	lbs	kg
10" Cylindro Series	No Saucer Available			
14" Cylindro Series	10.43 x 1.97	26.5 x 5	1.5	0.7
16" Cylindro Series	12.2 x 2.36	31 x 6	2	0.9
18" Cylindro Series	13.78 x 2.5	35 x 6.35	3	1.4
23" Cylindro Series	17.32 x 2.95	44 x 7.5	4.5	2.1
29" Cylindro Series	22.44 x 2.83	57 x 7.18	7	3.2





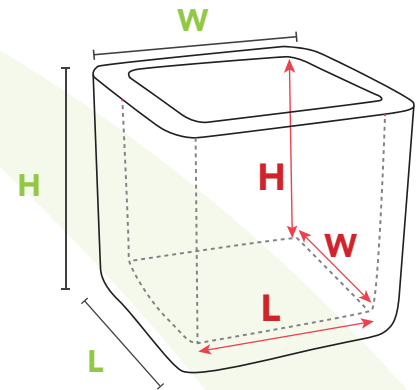
## QUATTRO SERIES



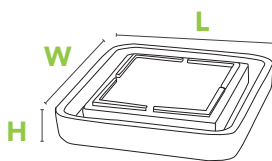
[MATTE]



External Dimensions			Internal Dimensions			
	L x W x H (in)	L x W x H (cm)	L x W x H (in)	L x W x H (cm)	lbs	kg
12"	12.37 x 12.37 x 12.62	31.41 x 31.41 x 32.05	7.75 x 7.75 x 11.00	19.68 x 19.68 x 27.94	5	2.3
19"	19.12 x 19.12 x 19.50	48.50 x 48.50 x 49.50	11.75 x 11.75 x 17.00	29.84 x 29.84 x 43.18	16.8	7.6
27"	27.00 x 27.00 x 26.87	68.50 x 68.50 x 68.24	19.75 x 19.75 x 23.50	48.90 x 48.90 x 59.69	45.5	20.6



Saucer sold separately



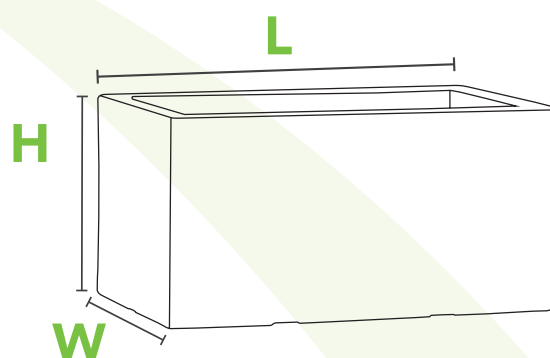
Saucer Dimensions/ Dimensiones del plato					
	L x W x H (in)	L x W x H (cm)	lbs	kg	
12" Quattro Series	11.4 x 11.4 x 1.8	29 x 29 x 4.57	1.5	0.6	
19" Quattro Series	18 x 18 x 3	45.72 x 45.72 x 7.62	6	2.7	
27" Quattro Series	25.7 x 25.7 x 4	65.27 x 65.27 x 10.16	12	5.4	



## RECTANGULAR SERIES [MATTE]



Dimensions				
	L x W x H (in)	L x W x H (cm)	lb	kgs
24"	23.60 x 12.20 x 13.77	60 x 31 x 35	12	5.4
32"	31.49 x 12.20 x 13.77	80 x 31 x 35	14	6.3



Saucer sold separately



Saucer Dimensions/ Dimensiones del plato				
	L x W x H (in)	L x W x H (cm)	lbs	kgs
24" Rectangular Series	26.7 x 17 x 4.25	67.81 x 43 x 10.7	8.5	3.8
32" Rectangular Series	35 x 17 x 4.25	88.9 x 43 x 10.7	10.5	5





## VIVO SERIES



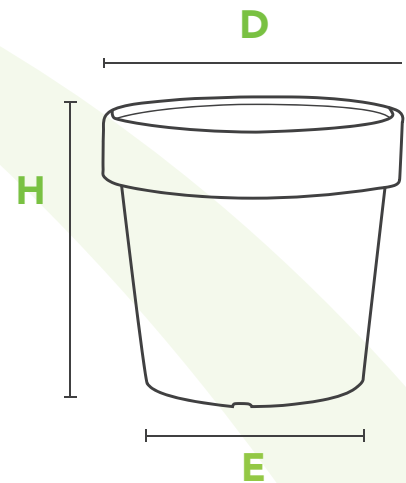
[GLOSS]



[MATTE]



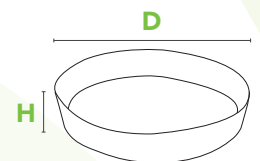
Pot Dimensions						
	Sold w/saucer	Finish	D x H x E (in)	D x H x E (cm)	lbs	kg
12"	✓	Matte	12.12 x 11.12 x 8.62	30.78 x 28.24 x 21.89	1.5	0.6
14"	✓	Matte	13.87 x 15.50 x 8.00	35.22 x 39.37 x 20.32	2.5	1.0
16"	✓	Matte	16.25 x 14.50 x 11.37	41.27 x 36.83 x 28.87	3.5	1.6
18"	✓	Matte	18.12 x 16.25 x 12.25	46.02 x 41.27 x 31.11	4.0	1.8
20"	✗	Matte	20.12 x 18.25 x 14.00	51.10 x 46.35 x 35.56	5.5	2.5
26"	✗	Gloss	26.12 x 23.37 x 18.25	66.34 x 59.35 x 46.35	11.0	5.0
30"	✗	Gloss	30.25 x 26.87 x 21.00	76.83 x 68.24 x 53.34	17.0	7.7



Saucers sold separately: 20", 26", 30"



Saucer Dimensions/ Dimensiones del plato						
	Sold w/Pot	Finish	D x H (in)	D x H (cm)	lbs	kg
12" VIVO Series	✓	Matte	10.4 x 1.3	26.41 x 3.30	0.6	0.3
14" VIVO Series	✓	Matte	10.0 x 1.0	25.4 x 2.54	0.5	0.2
16" VIVO Series	✓	Matte	13.0 x 2.00	33.02 x 5.08	1.0	0.4
18" VIVO Series	✓	Matte	15.3 x 2.30	38.86 x 5.84	1.1	0.5
20" VIVO Series	✗	Matte	16.5 x 2.70	41.9 x 6.85	1.4	0.6
26" VIVO Series	✗	Gloss	21.2 x 3.50	53.84 x 8.89	3.0	1.3
30" VIVO Series	✗	Gloss	25.0 x 3.90	63.5 x 9.90	4.5	2.0





## TUFF SERIES



[GLOSS]



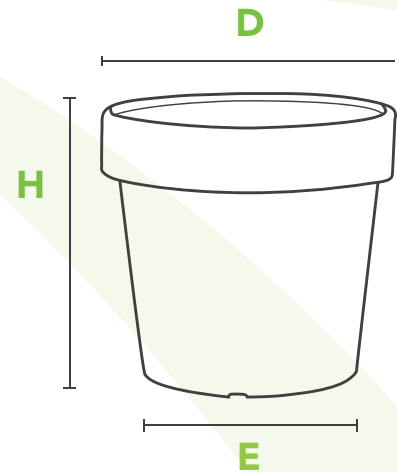
[MATTE]



[GLOSS]



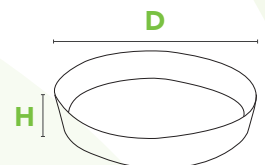
Pot Dimensions						
	Sold w/saucer	Finish	D x H x E (in)	D x H x E (cm)	lbs	kg
12"	✓	Matte	12.12 x 11.12 x 8.62	30.78 x 28.24 x 21.89	1.5	0.6
14"	✓	Matte	13.87 x 15.50 x 8.00	35.22 x 39.37 x 20.32	2.5	1.0
16"	✓	Matte	16.25 x 14.50 x 11.37	41.27 x 36.83 x 28.87	3.5	1.6
18"	✓	Matte	18.12 x 16.25 x 12.25	46.02 x 41.27 x 31.11	4.0	1.8
20"	✗	Matte	20.12 x 18.25 x 14.00	51.10 x 46.35 x 35.56	5.5	2.5
26"	✗	Gloss	26.12 x 23.37 x 18.25	66.34 x 59.35 x 46.35	11.0	5.0
30"	✗	Gloss	30.25 x 26.87 x 21.00	76.83 x 68.24 x 53.34	17.0	7.7



Saucers sold separately: 20", 26", 30"



Saucer Dimensions/ Dimensiones del plato						
	Sold w/Pot	Finish	D x H (in)	D x H (cm)	lbs	kg
12" VIVO Series	✓	Matte	10.4 x 1.30	26.41 x 3.30	0.6	0.3
14" VIVO Series	✓	Matte	10.0 x 1.00	25.4 x 2.54	0.5	0.2
16" VIVO Series	✓	Matte	13.0 x 2.00	33.02 x 5.08	1.0	0.4
18" VIVO Series	✓	Matte	15.3 x 2.30	38.86 x 5.84	1.1	0.5
20" VIVO Series	✗	Matte	16.5 x 2.70	41.9 x 6.85	1.4	0.6
26" VIVO Series	✗	Gloss	21.2 x 3.50	53.84 x 8.89	3.0	1.3
30" VIVO Series	✗	Gloss	25.0 x 3.90	63.5 x 9.90	4.5	2.0





# TRADITIONAL COLLECTION



Venus



Really Big Pot



Rectangular Decorated



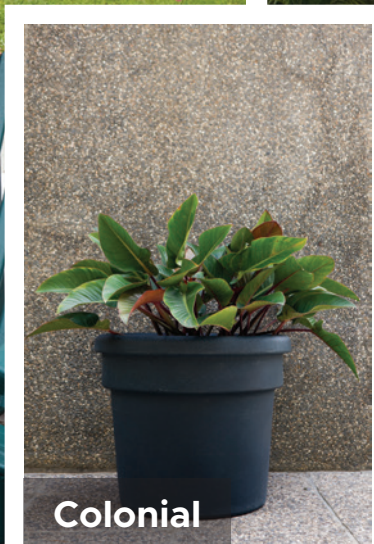
Classic



Round Decorated



Square Planters



Colonial



Urn Planter



Square Decorated

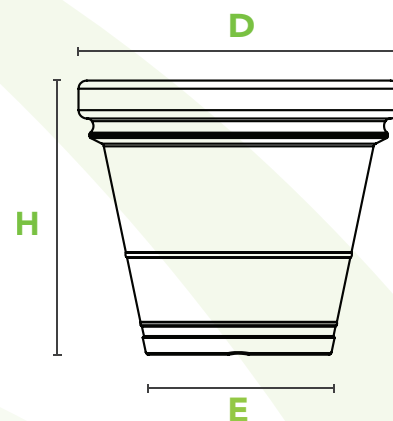




## VENUS SERIES



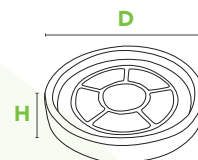
Pot Dimensions					
	D x H x E (in)	D x H x E (cm)	lbs	kg	
20"	20.00 x 17.00 x 11.56	51.11 x 43.18 x 29.37	4.7	2.1	
24"	24.00 x 20.44 x 13.88	60.96 x 51.90 x 35.24	8.6	3.9	
28"	28.13 x 24.00 x 16.13	71.43 x 60.96 x 40.95	13.8	6.2	
32"	32.00 x 27.50 x 18.50	81.28 x 69.85 x 47.99	13.8	6.2	



Sold with saucer



Saucer Dimensions				
	D x H (in)	D x H (cm)	lbs	kg
20" Venus Series	14.5 x 1.5	36.83 x 3.81	1	0.4
24" Venus Series	17.44 x 2	44.3 x 5.08	1.2	0.6
28" Venus Series	20.125 x 2.3	51.12 x 5.84	2.1	0.9
32" Venus Series	22.93 x 2.75	58.24 x 6.99	2.1	0.9



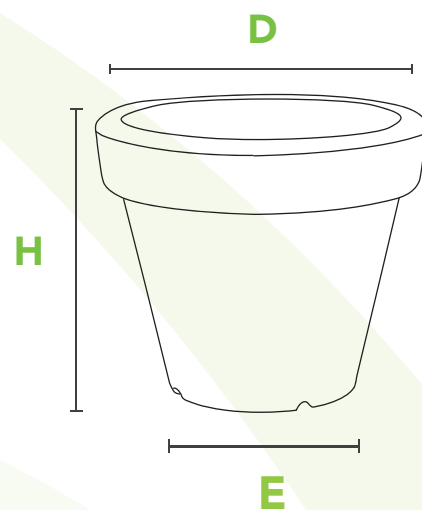




## CLASSIC SERIES



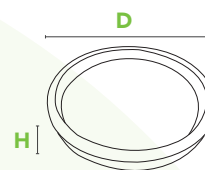
Pot Dimensions					
	D x H x E (in)	D x H x E (cm)	lbs	kg	
14"	13.87 x 11.50 x 8.00	35.22 x 29.21 x 20.32	2.5	1.0	
16"	16.00 x 13.37 x 9.25	40.64 x 33.95 x 23.49	3.4	1.5	
20"	20.00 x 19.00 x 11.62	50.80 x 48.26 x 29.51	6.4	2.9	



Sold with saucer



Saucer Dimensions/ Dimensiones del plato				
	D x H (in)	D x H (cm)	lbs	kg
14" Classic Series	10 x 1	25.4 x 2.54	0.5	0.2
16" Classic Series	11.4 x 1	29 x 2.54	0.5	0.2
20" Classic Series	14.7 x 1.5	37.33 x 3.8	1.5	0.7





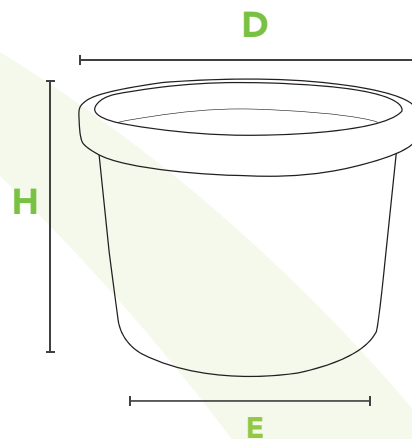
## REALLY BIG POT

NS [GLOSS]



Pot Dimensions					
	D x H x E (in)	D x H x E (cm)	lbs	kg	
46"	46.12 x 31.87 x 37.5	117.14 x 80.94 x 95.25	40	18.2	

No saucer available



### What can you use to fill this Really Big Pot?

Because your filler should take up at least one-fourth to one-third of your pot, you need to make sure it's healthy for your plants and able to stand the test of time. Use materials that are inert, and won't react with soil, such as plastic drink containers, milk jugs, crushed soda cans or coconut fiber.



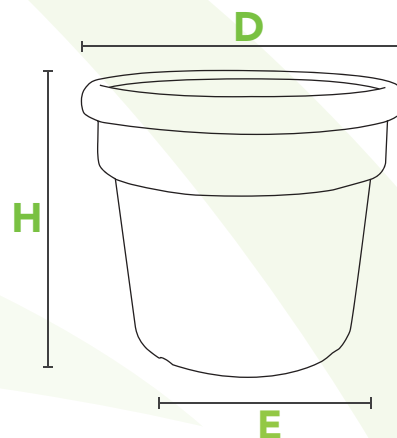
## COLONIAL SERIES

NS [MATTE]



Pot Dimensions				
	D x H x E (in)	D x H x E (cm)	lbs	kg
32"	31.87 x 27.00 x 23.50	80.94 x 68.58 x 59.70	17.0	7.7
40"	39.75 x 33.00 x 29.00	100.96 x 83.82 x 73.66	31.5	14.2

No saucer available



### Accentuate your garden in style

The soft and earthy colours of this planter gives the perfect base for your plant. Although large, they are light weight and blend well in any interior or exterior.

### Can an orange tree grow in this pot?

Citrus of all kinds can be grown in our Colonial Series. The most common are lemons, limes and oranges.



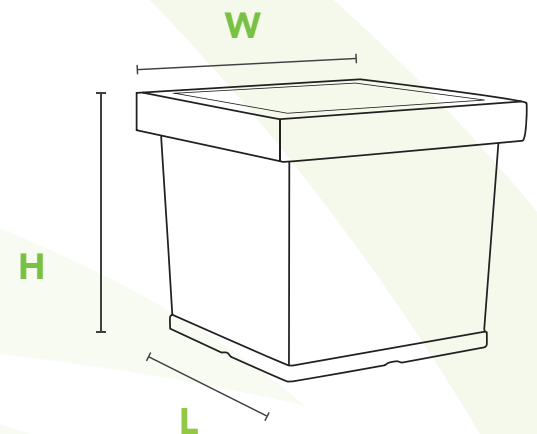
## SQUARE PLANTER

NS [MATTE]



Pot Dimensions				
	L x H x W (in)	L x H x W (cm)	lbs	kg
19"	15.37 x 16.25 x 18.5	39.04 x 41.28 x 47.00	8.0	3.6

No saucer available



 **Contemporize your home or office**  
The Square Planter strikes the perfect balance between style and utility giving you the best of both worlds.





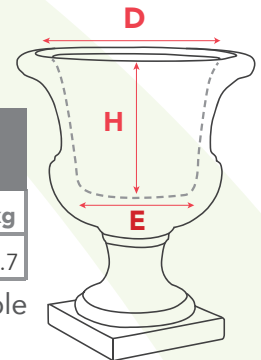
## URN PLANTER

NS [MATTE]



Pot Dimensions						
External Dimensions			Internal Dimensions			
	D x H (in)	D x H (cm)	D x H x E (in)	D x H x E (cm)	lbs	kg
22"	22.37 x 27.12	56.82 x 68.88	17.25 x 14 x 9	43.82 x 35.56 x 22.86	14.8	6.7

No saucer available



### Where is the best spot for this pot?

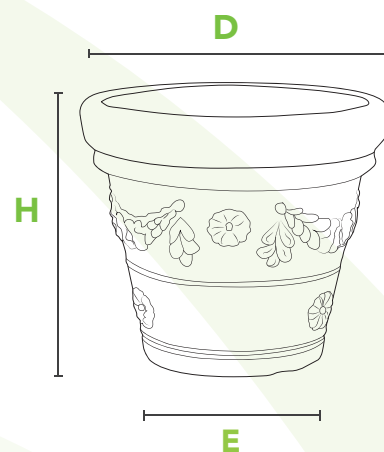
An entryway is a great spot! You can manage that first impression and welcome guests into your home by displaying our Urn Planter on either side of your front door. Sculpted trees or natural arrangements can work well with this rustic planter.



## ROUND DECORATED



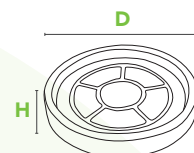
Pot Dimensions					
	D x H x E (in)	D x H x E (cm)	lbs	kg	
14"	13.12 x 11.62 x 7.87	33.32 x 29.51 x 19.98	2.0	0.9	
16"	15.50 x 13.25 x 9.00	39.37 x 33.65 x 22.86	2.7	1.2	
20"	19.37 x 16.50 x 11.37	49.19 x 41.91 x 28.88	4.6	2.0	
26"	25.25 x 21.00 x 15.12	64.13 x 53.34 x 38.40	7.4	3.3	



Sold with saucer



Saucer Dimensions/ Dimensiones del plato				
	D x H (in)	D x H (cm)	lbs	kg
14" Round Decorated Planter	9.6 x 1.1	24.38 x 2.79	0.4	0.1
16" Round Decorated Planter	10.8 x 1.5	27.43 x 3.8	0.5	0.2
20" Round Decorated Planter	13.7 x 1.5	34.8 x 3.8	1.0	0.4
26" Round Decorated Planter	18.3 x 2	46.48 x 5.08	1.2	0.6





## SQUARE DECORATED

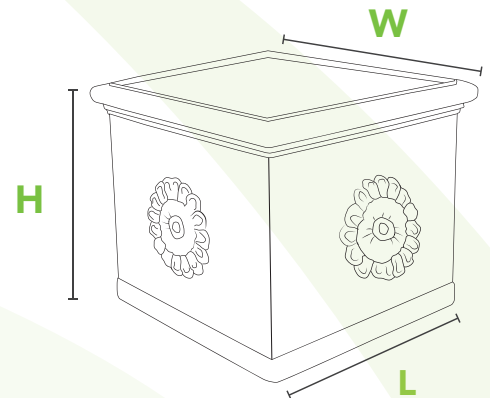
NS [MATTE]



### Pot Dimensions

	L x H x W (in)	L x H x W (cm)	lbs	kg
21"	19.37 x 18.75 x 21.25	49.20 x 47.63 x 53.98	13.0	5.8

No saucer available



### What happens if you use garden soil in a pot?

Your garden soil may contain weed seeds, insects and fungal diseases. Also garden soil is heavy, this makes the pots harder to lift than if you use potting mix.



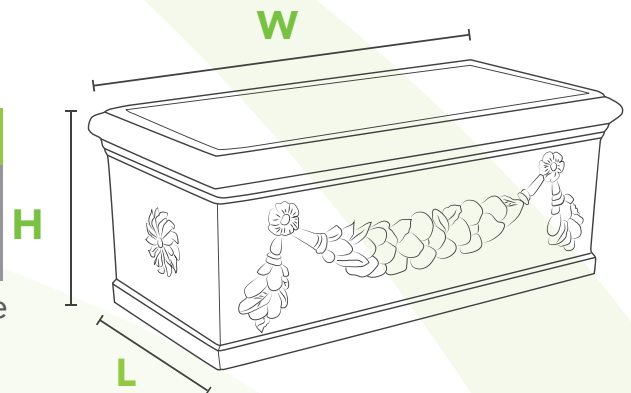
## RECTANGULAR DECORATED

NS [MATTE]



Pot Dimensions				
	L x H x W (in)	L x H x W (cm)	lbs	kg
31"	13.26 x 12.50 x 30.50	33.66 x 31.75 x 77.47	9.80	4.4

No saucer available



### Rectangular pots don't need to be watered as frequently as tapered pots.

Unlike tapered pots, rectangular planters have more soil volume in the lower half of the container. This enables the soil to retain moisture better.





## TUBI SERIES

16" Short	16.0 x 16.00 in	8.0 Lbs
Matte	40.6 x 40.6 cm	3.6 Kgs
16" Tall	16.0 x 27.50 in	10.0 Lbs
Matte	40.6 x 68.6 cm	4.5 Kgs

## RIBBED SERIES

16" Short	16.0 x 16.00 in	8.0 Lbs
Matte	40.6 x 40.6 cm	3.6 Kgs
16" Tall	16.0 x 19.00 in	10.0 Lbs
Matte	40.6 x 48.3 cm	4.5 Kgs



## ARIA SERIES

16" Matte	16.0 x 13.25 in	7.5 Lbs
	40.6 x 33.6 cm	3.4 Kgs
18" Matte	18.0 x 15.00 in	9.0 Lbs
	45.7 x 38.1 cm	4.1 Kgs
22" Matte	22.0 x 18.25 in	10.5 Lbs
	55.8 x 46.3 cm	4.8 Kgs



## AVAILABLE COLOURS



Ash



Chocolate



Carbon



Copper



Taupe



Stone



Midnight



Vanilla

# CARING FOR YOUR POTS & PLANTERS

When cleaning your planter, use a mixture of antibacterial dish soap and water.

**For pots with a matte finish, we suggest using a soft bristle brush and for pots with a gloss finish, a soft cloth should be used.**

Completely saturate your soft bristle brush/soft cloth with your antibacterial dish soap and water mixture and scrub your pot until it's clean.

Never use an abrasive cleaner that may burn or corrode. Also do not use products containing chlorine or other bleaching ingredients.



**No harsh  
chemicals**



**Soft  
cloth**



**Water**



**Mild  
detergent**



# STURDY

*Rope*



## YELLOW TWISTED POLYPROPYLENE ROPE

- Strong synthetic fiber weave
- Resistant to oil & more
- Reduced slip & low stretch
- Ideal for wet environments
- Uv resistant

SIZE	BREAKING LOAD	FT. PER Lb	SPOOL		COIL	
			WEIGHT	LENGTH	WEIGHT	LENGTH
3/16"	650 lbs	1 pound=87 ft	24.75 lbs	2,160 ft	8.30 lbs	720 ft
1/4"	1,631 lbs	1 pound=76 ft	23.75 lbs	1,800 ft	9.50 lbs	720 ft
5/16"	1,710 lbs	1 pound=50 ft	21.60 lbs	1,080 ft	15.0 lbs	720 ft
3/8"	2,430 lbs	1 pound=33 ft	21.60 lbs	720 ft	21.6 lbs	720 ft
7/16"	3,150 lbs	1 pound=29 ft	25.20 lbs	720 ft	27.0 lbs	720 ft
1/2"	3,780 lbs	1 pound=23 ft	21.60 lbs	500 ft	33.1 lbs	720 ft
9/16"	4,590 lbs	1 pound=16 ft	19.00 lbs	300 ft	45.0 lbs	720 ft
5/8"	5,580 lbs	1 pound=14 ft	20.00 lbs	240 ft	51.8 lbs	720 ft
3/4"	7,850 lbs	1 pound=10 ft	20.00 lbs	180 ft	75.0 lbs	720 ft
1"	12,825 lbs	1 pound=6 ft	--	--	129.6 lbs	720 ft



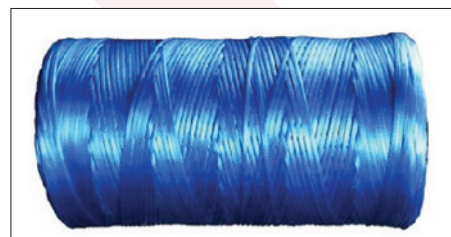
## SISAL ROPE (NATURAL FIBER)

SIZE	COIL	
	WEIGHT	LENGTH
1/4"/6 mm	13 lbs	720 ft
5/16"/8 mm	19 lbs	720 ft
3/8"/10 mm	27 lbs	720 ft
1/2"/12 mm	50 lbs	720 ft
5/8"/16 mm	91 lbs	720 ft
3/4"/18 mm	115 lbs	720 ft
1"/24 mm	192 lbs	720 ft
1 1/8"/28 mm	247 lbs	720 ft
1 1/4"/30 mm	286 lbs	720 ft
1 1/2"/36 mm	410 lbs	720 ft
2"/48 mm	734 lbs	720 ft



## TWINE

WEIGHT	LENGTH
0.25 lb	427 ft
2.00 lb	2000 ft
3.50 lb	3500 ft
4.00 lb	3500 ft



## CALYPSO FISHING ROPE

### ROPE DATA

Material: Polypropylene (Yellow & Black)  
 3 Strand Twist Pattern  
 Specific Gravity: 0.91  
 Operating Temperature: Up to 80° C

### ROPE FEATURES

- Lightweight
- Strong and durable
- Easy on hands
- Abrasion, UV and rot resistant
- Retains shape when wet
- Floats and does not absorb water

ROPE SPECS			COIL	
SIZE	BREAKING LOAD	FEET PER POUND	WEIGHT	LENGTH
1/4" -7mm	1,631 lbs	1 pound = 76.00 ft	9.50 lbs	720 ft
5/16"	1,710 lbs	1 pound = 50.00 ft	15.00 lbs	720 ft





### ROPE CENTRE

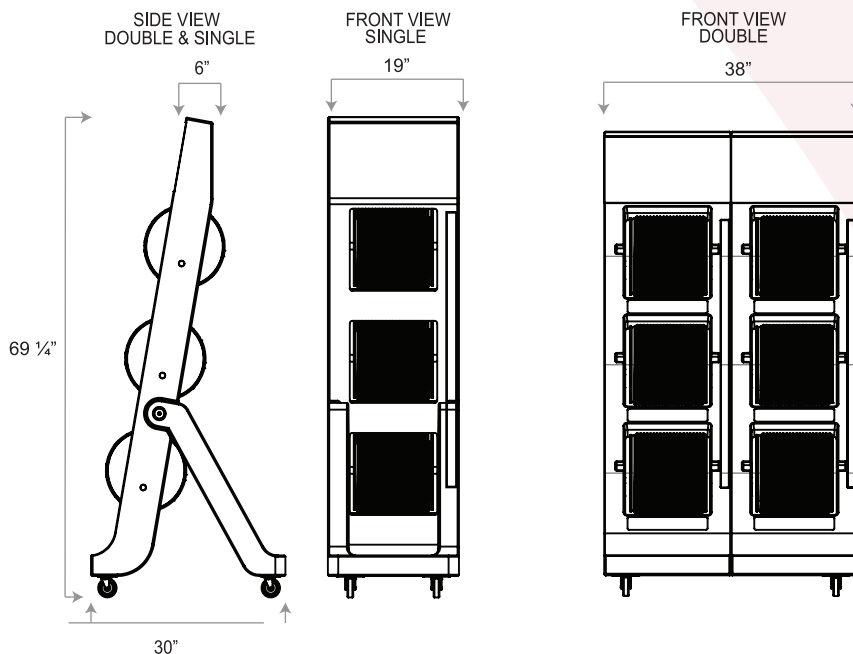
This Rope Centre creates a vertical storage space to display rope to be sold by various lengths.

Easy rope dispensing  
Minimal floor space  
Mounted on wheels for mobility  
Convenient measuring tool

### Available Colours



### DIMENSIONS



# BANANA INDUSTRY ESSENTIALS





## DIPPING TUB

Our Dipping Tub is constructed from sturdy Food & Drug Administration (F.D.A.) compliant plastic, for easy post harvest banana cleaning.

DIMENSIONS		CAPACITY
D	H	
24 in	13 in	56 Gal
61 cm	33 cm	212 L



## BANANA TRAYS

Our Banana Trays are UV resistant and will not fade, crack, bend or break. The smooth surface of our tray makes it easy to clean and resistant to most chemicals and solvents. Manufactured from Food & Drug Administration (F.D.A.) compliant polyethylene for agricultural applications and available with or without holes.

DIMENSIONS		
L	W	H
28 in	28 in	5 in
71 cm	71 cm	12 cm



## BANANA TWINE

Our Banana Twines are extensively used in agro-industries where high visibility and breaking strengths are of critical importance. Our banana twines are manufactured to exact breaking strengths and runnage per pound.

SPECIFICATIONS		
L	Wt	BREAK STRENGTH
4,100 ft	10 lbs	285-300 lbs
1,249 m	4.54 Kg	129-136 Kg



## PACO BAGS

Our Paco Bags assist in preserving moisture content during prolonged storage and shipment.

DIMENSIONS	
L	W
51 in	36 in
129 cm	91 cm





🏠 27-29 Don Miguel Road Extension  
El Socorro Extension  
El Socorro 280616  
Trinidad & Tobago

☎ +1 (868) 674-TANK (8265)

✉ [info@rotoplastics.co.tt](mailto:info@rotoplastics.co.tt)

🌐 [www.rotoplastics.co.tt](http://www.rotoplastics.co.tt)

